

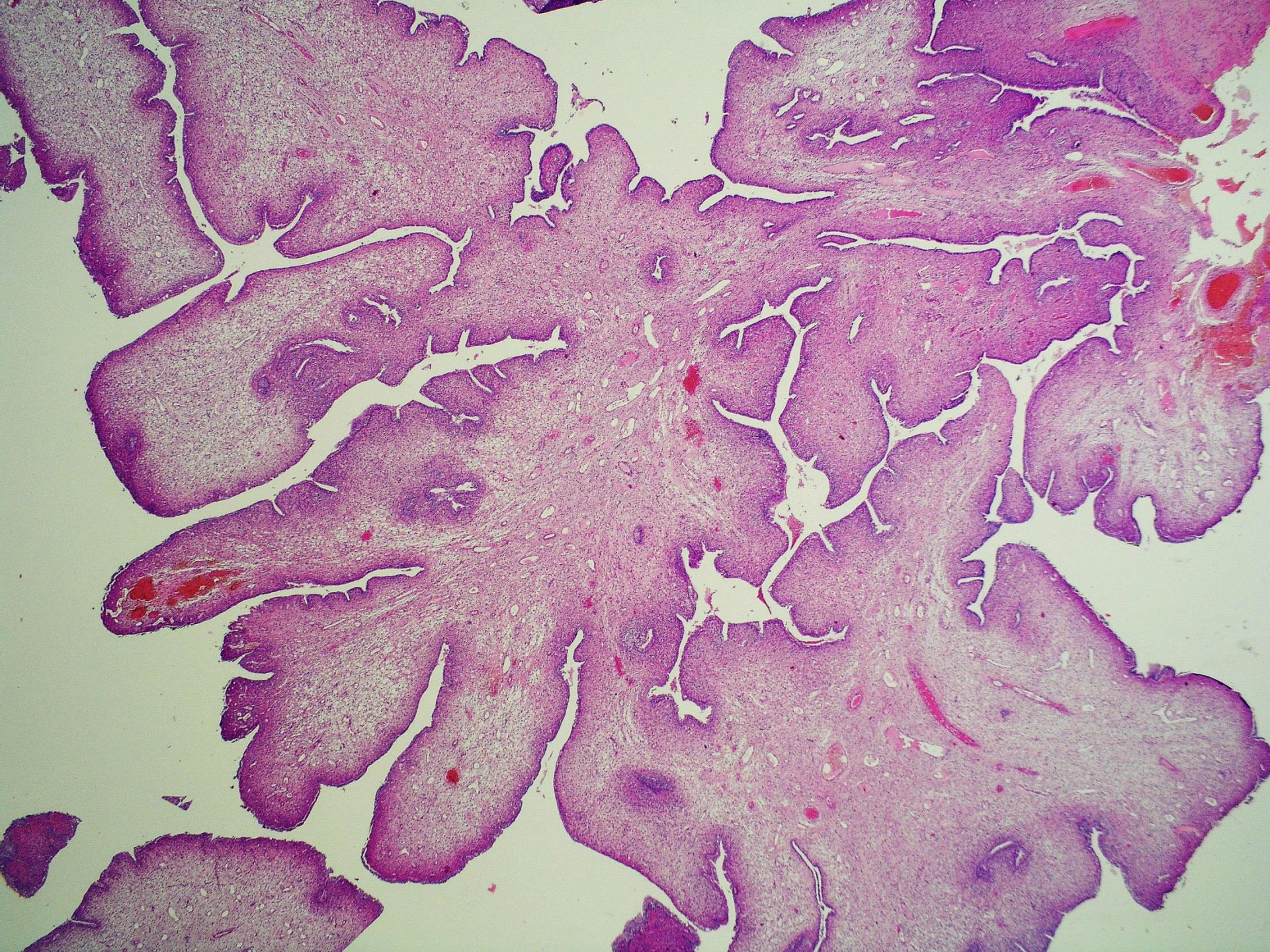
Prípád SDIAP 541

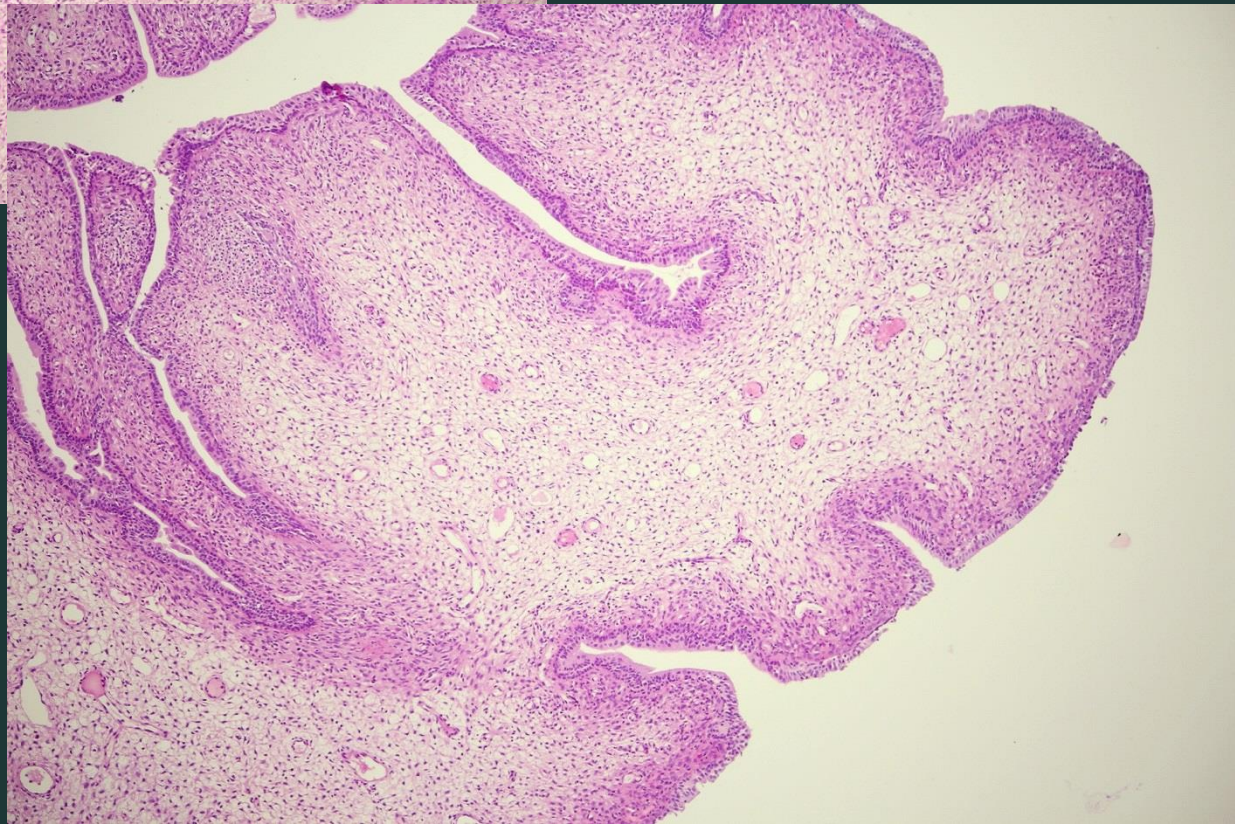
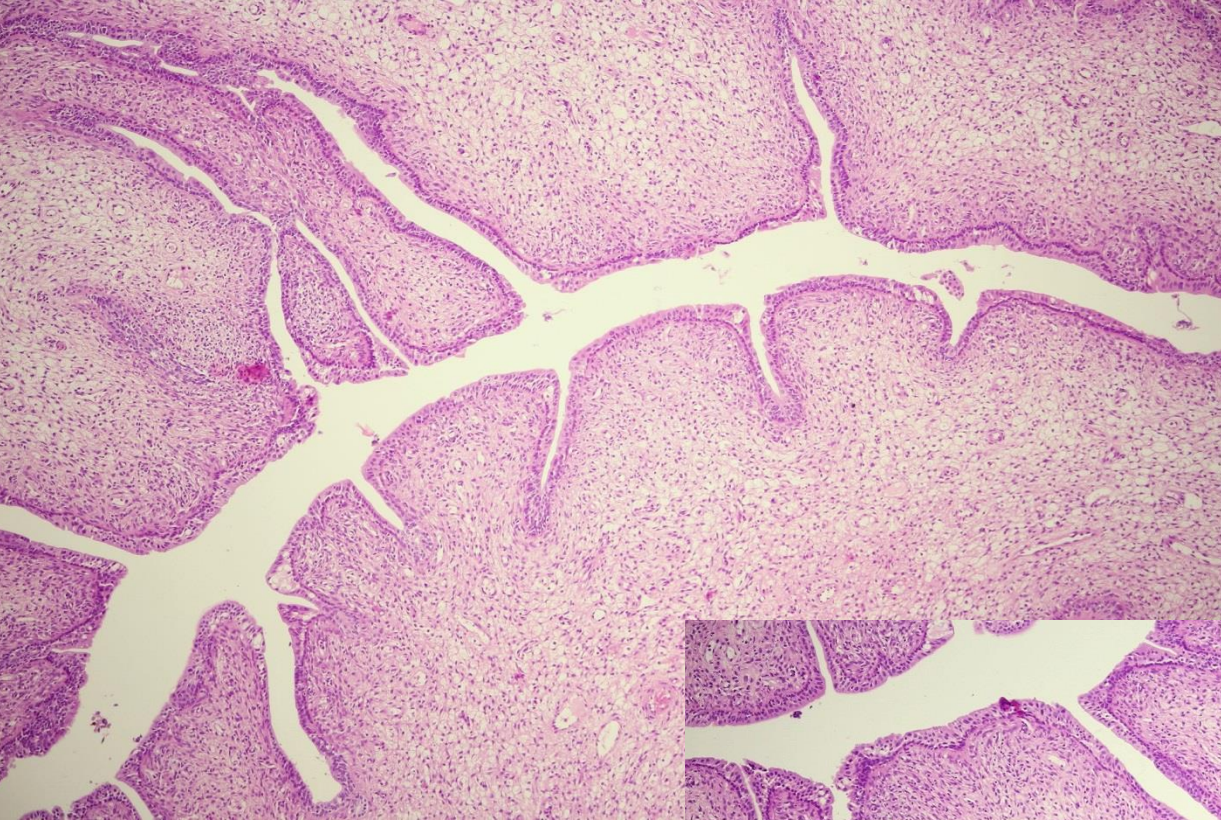
B. Rychly, Cytopathos, Bratislava

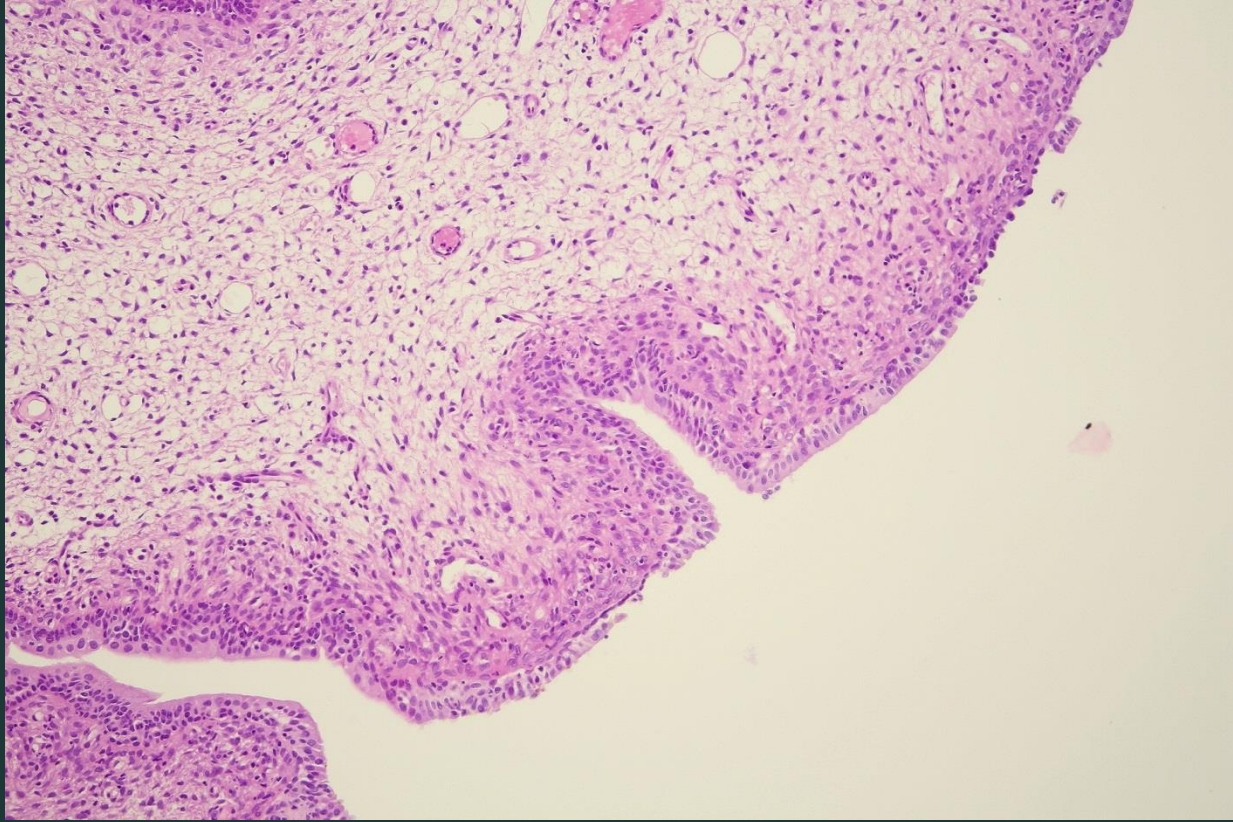
J. Benko, FNsP, Nové Zámky

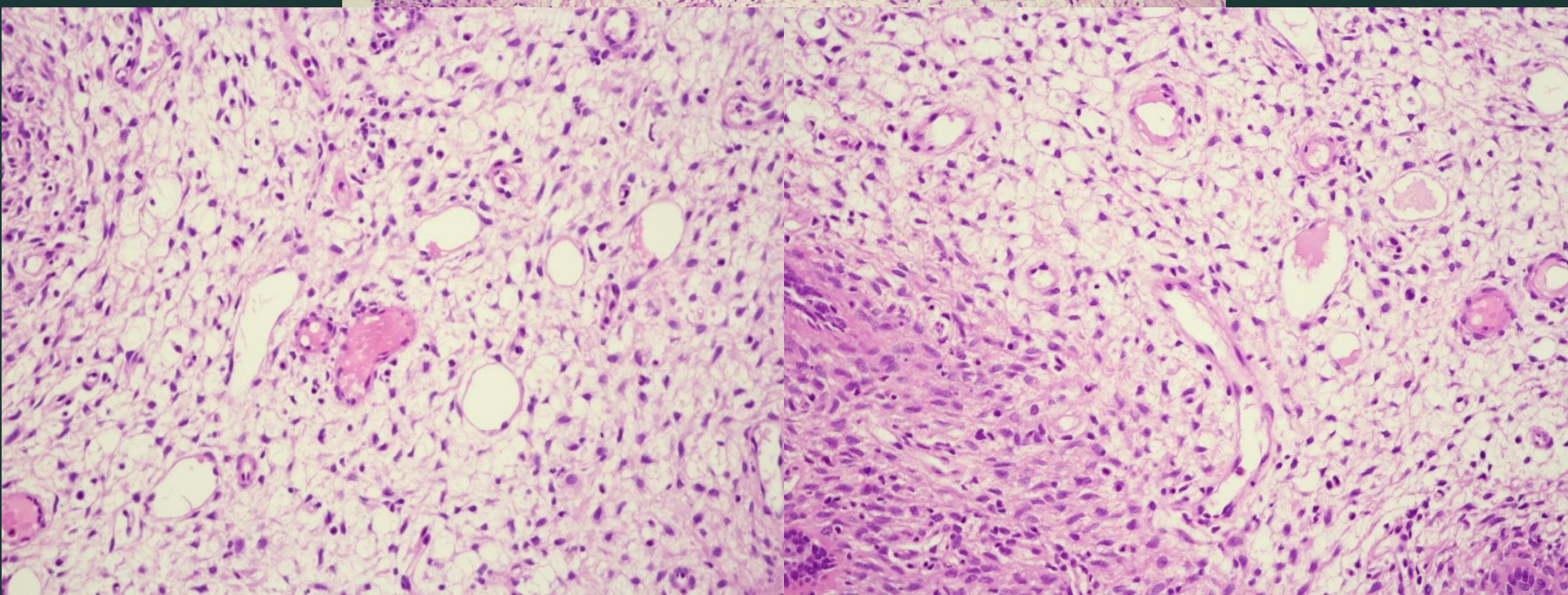
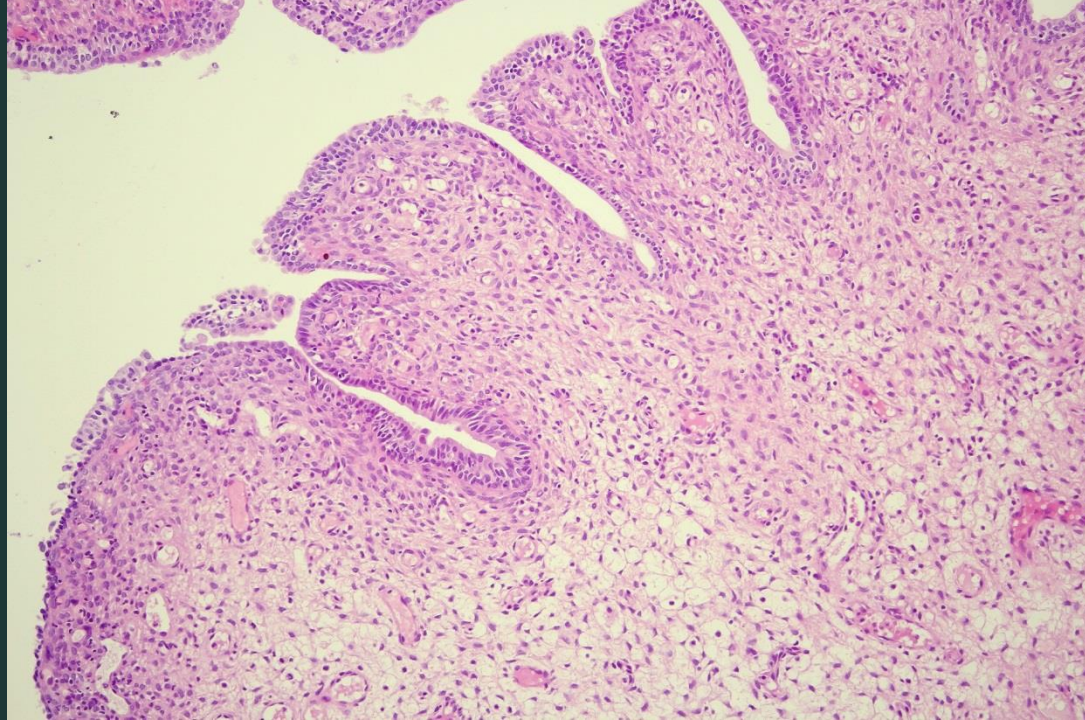
Klinické údaje

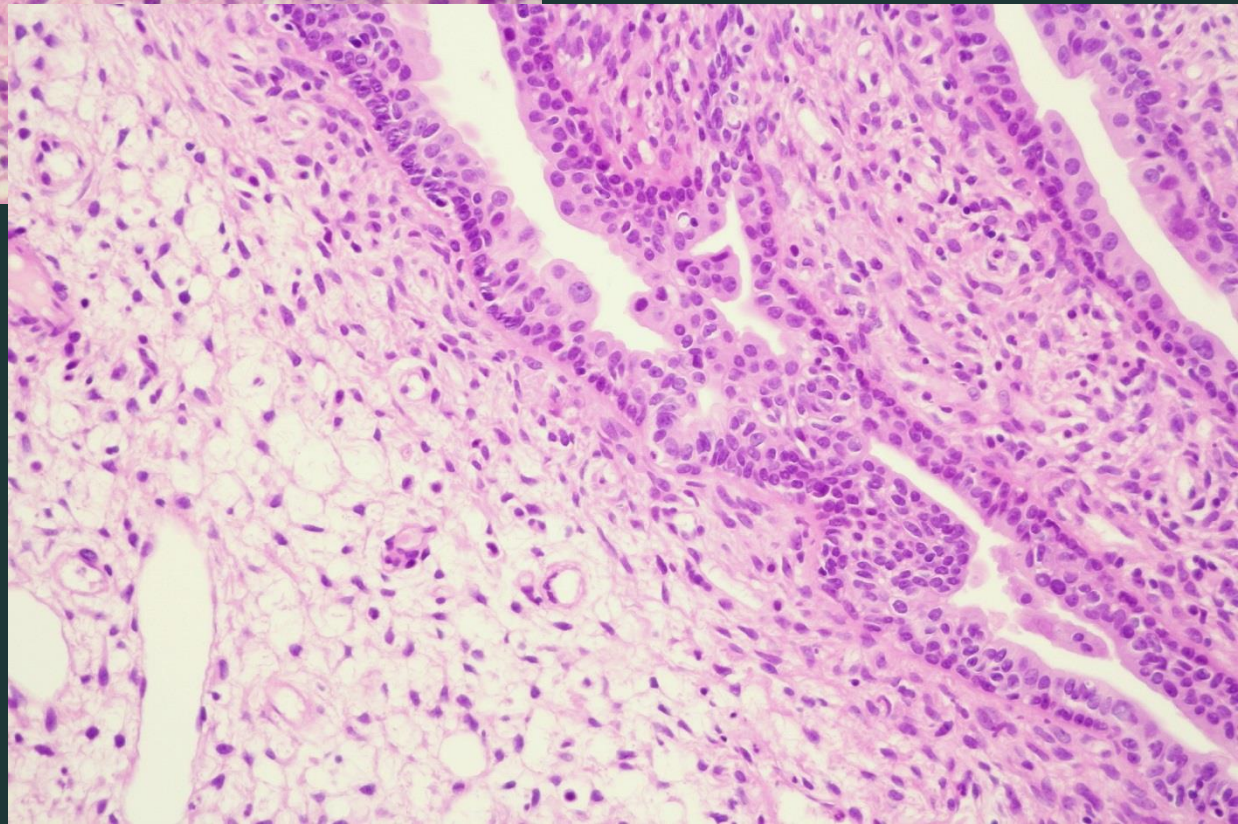
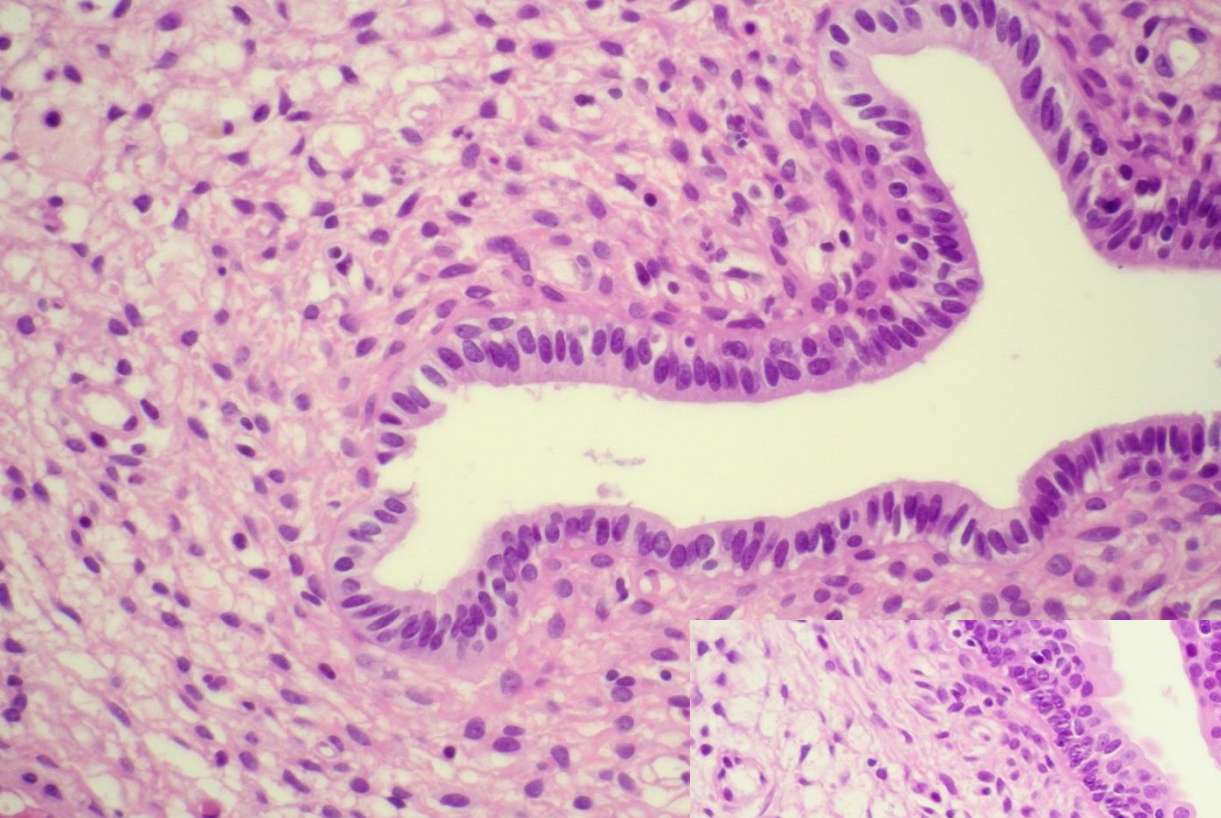
- 51-ročná žena
- 2 cm polyp cervixu

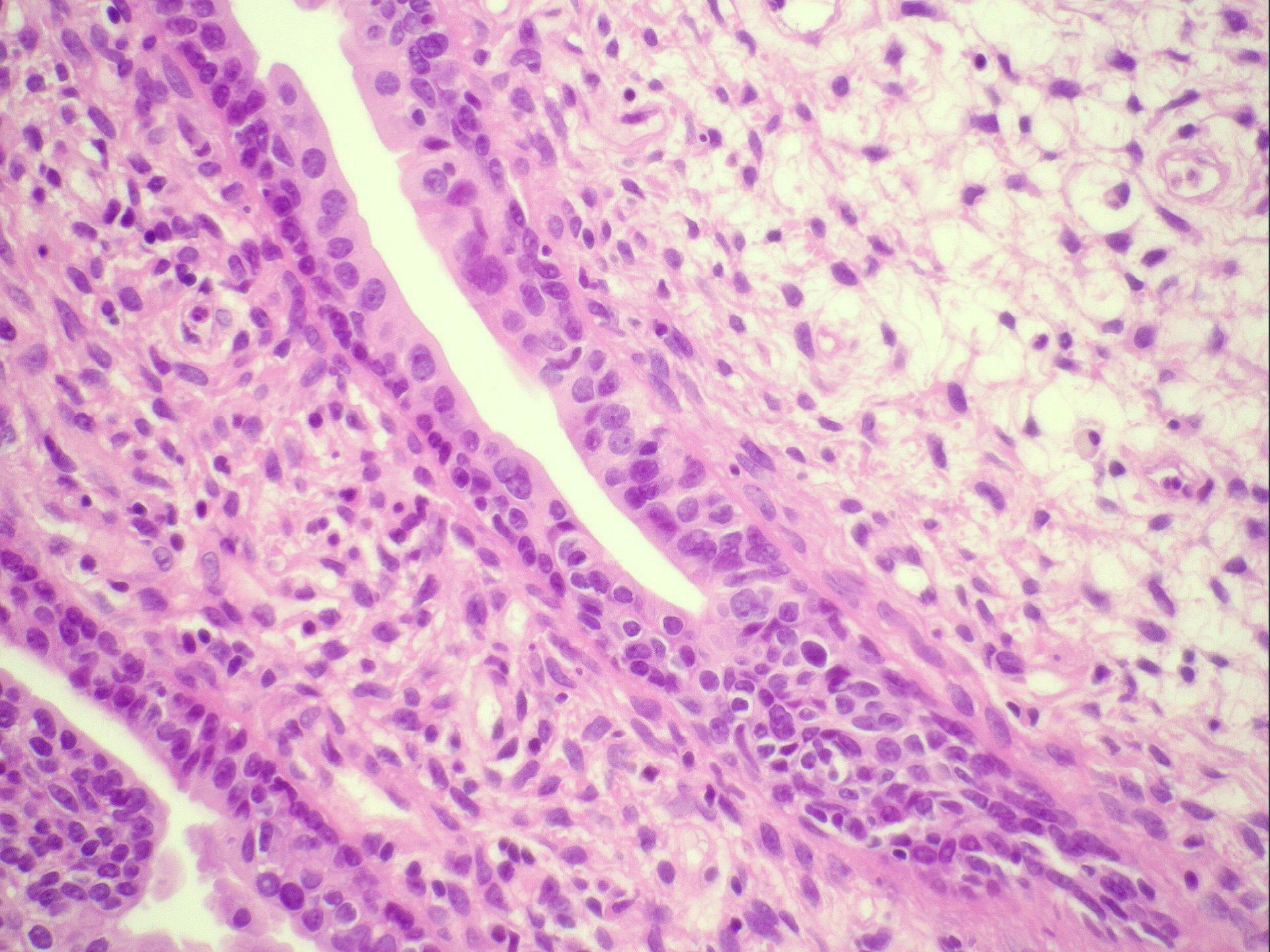


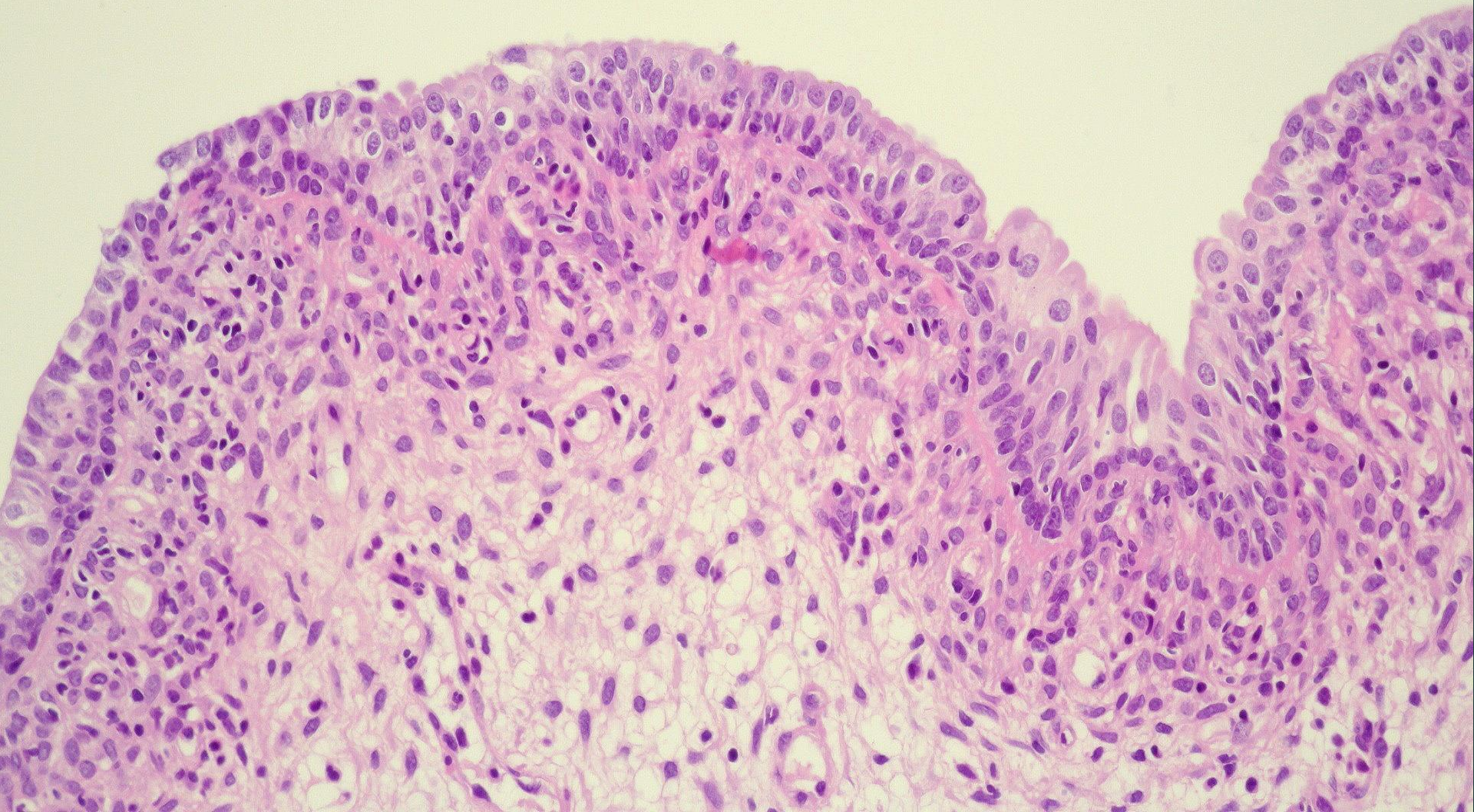


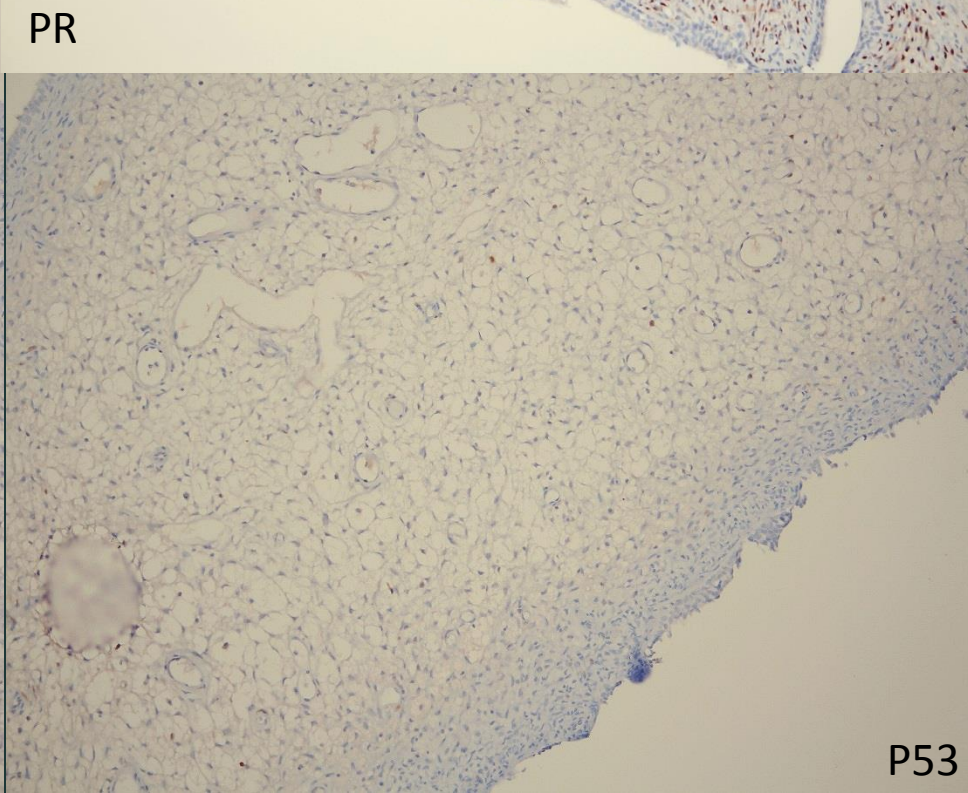
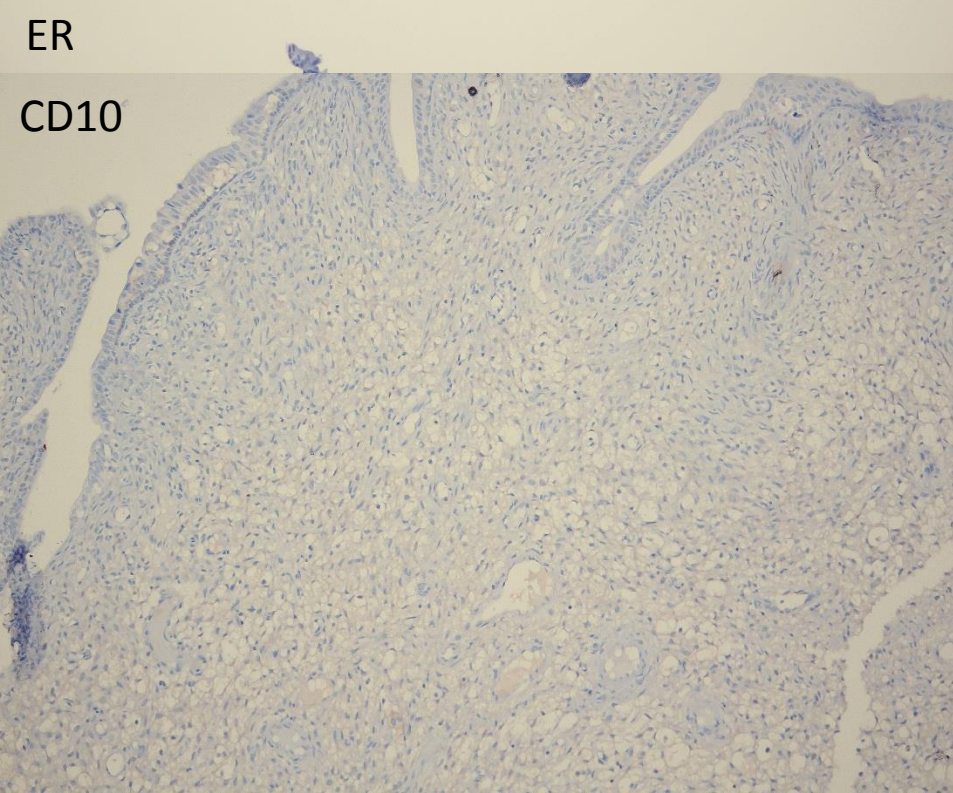
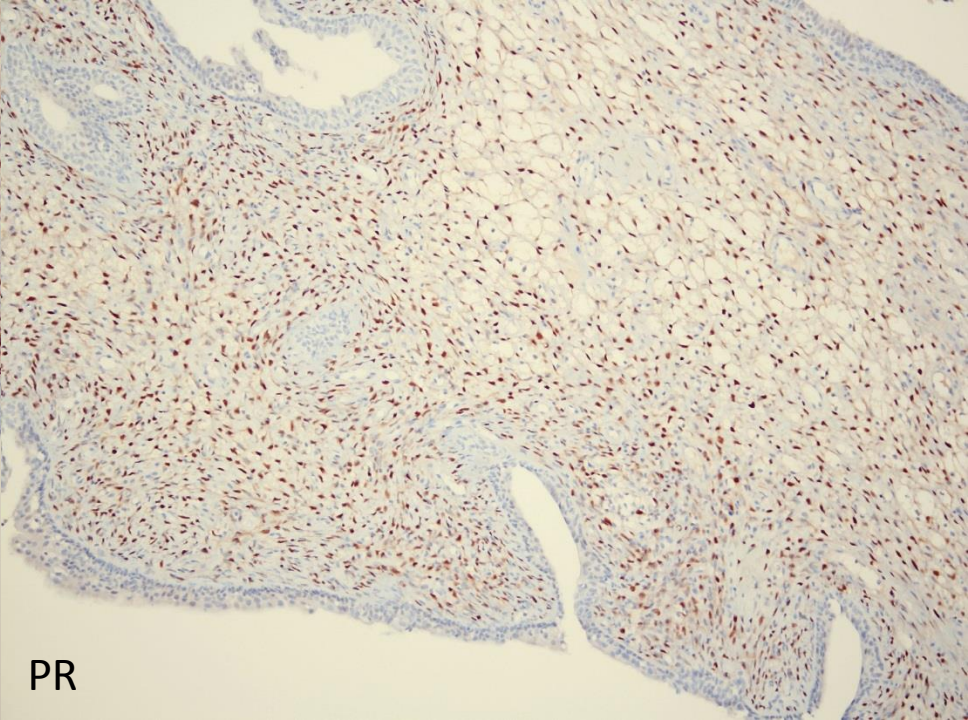
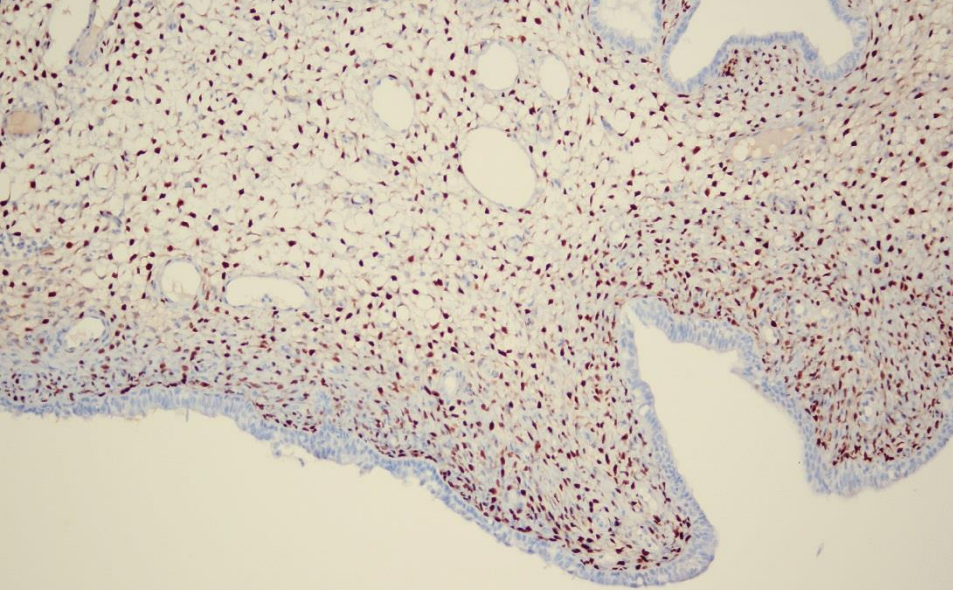


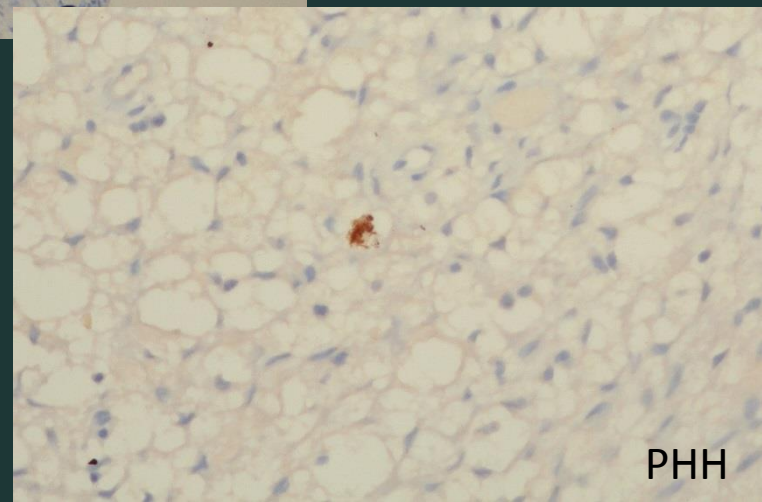
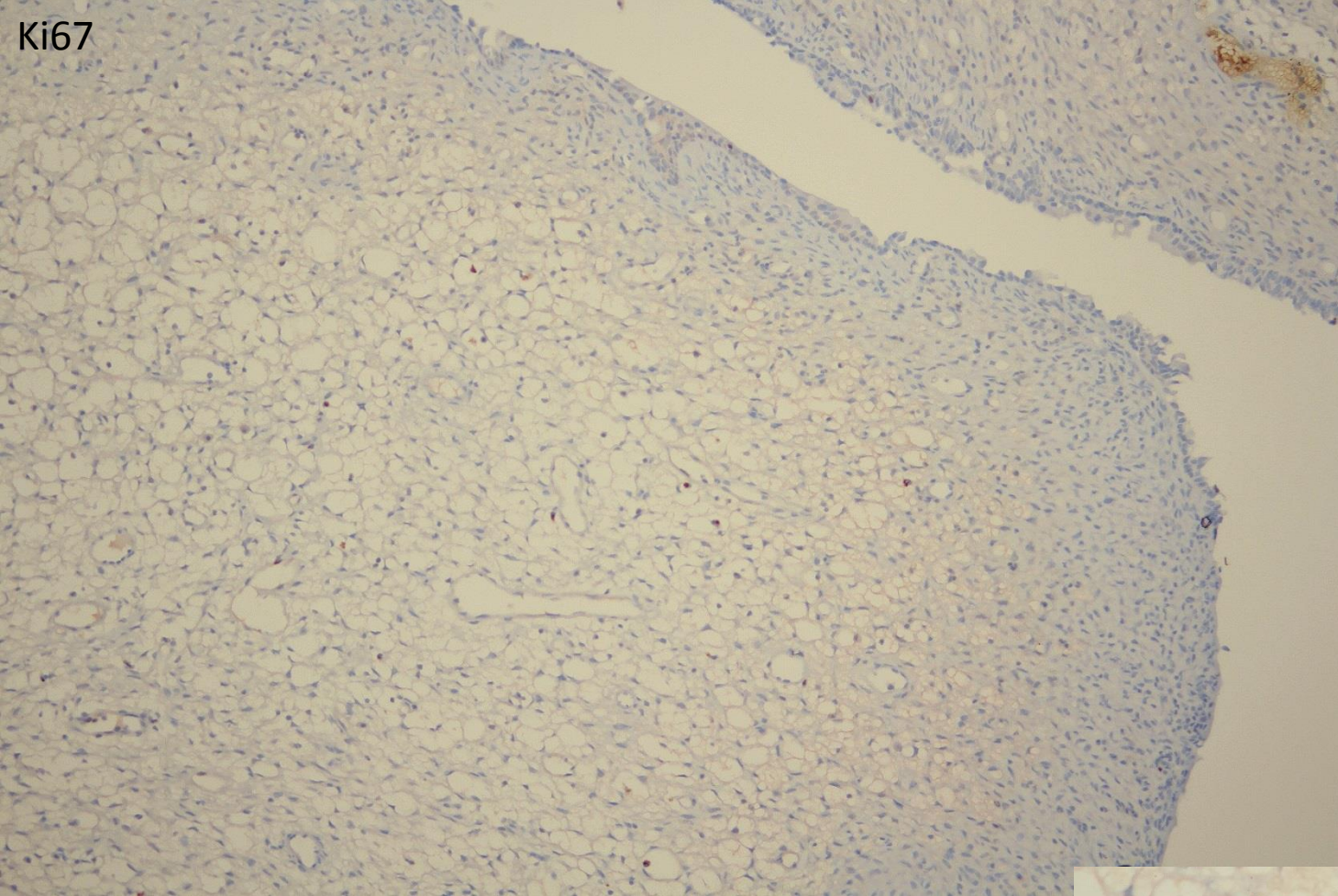














Adenofibróm?

- chýba stromálna kondenzácia „a“ menej ako dve mitózy

Existuje adenofibróm?

Mullerian Adenosarcoma

A Clinicopathologic and Immunohistochemical Study of 55 Cases Challenging the Existence of Adenofibroma

Alberto Gallardo, MD and Jaime Prat, MD, PhD, FRCPath

(Am J Surg Pathol 2009;33:278–288)

- Kurman RJ, American Registry of Pathology, Armed Forces Institute of Pathology (US). Tumors of the Cervix, Vagina, and Vulva. Washington, DC: American Registry of Pathology in collaboration with the Armed Forces Institute of Pathology; 2010.
- Robboy SJ, Bentley RC, Russell P, et al. Robboy's Pathology of the Female Genital Tract. Churchill Livingstone: Elsevier; 2008:440–443.
- McCluggage WG. Mullerian adenosarcoma of the female genital tract. Adv Anat Pathol 2010;17:122-9.

Adenofibróm?

- *zriedkavo* malígne správanie aj tumory:
 - bez sarkomatózneho prerastenia
 - mierna stromálna atypia
 - fokálna periglandulárna kondenzácia
 - menej ako 2 mitózy

Naša diagnóza

LG zmiešaný Mülleriánsky tumor

LG adenosarkóm

(v. s. priaznivé biologické správanie,
možná rekurencia, nemal by metastazovať)

MAS

- telo maternice, cervix, ovárium, tuba, vagína, Douglas (extrauterínne s endometriózou)
- väčšinou u starších, cervix – skôr u mladších
- agresívne správanie: invázia do myometria, sarkomatózne prerastenie (25% tumoru) - vyššie Ki, P53, strata CD10, ER, PR (inak ako stróma polypu, endometriózy,...)

LG MAS

- benígny epitel (občas atypický) a LG sarkóm (endometriálneho stromálneho typu)
- phyllodes like, kondenzácia strómy pod epitelom
- 4, potom 2 stromále mitózy
- heterológna zložka (najčastejšie rabdomyo)

Dif. dg.

- polyp, endometriálny stromálny tumor, karcinosarkóm, atypický polypoidný adenomyóm, embryonalny rabdomyosarkóm (botryoid),...

Uterine Polyps With Features Overlapping With Those of Müllerian Adenosarcoma

A Clinicopathologic Analysis of 29 Cases Emphasizing Their Likely Benign Nature

Brooke E. Howitt, MD, Bradley J. Quade, MD, PhD, and Marisa R. Nucci, MD

Am J Surg Pathol • Volume 39, Number 1, January 2015

- tamoxifen – fokálna stromálna kondenzácia
- nad 50 rokov – viac ako 2 mitózy
- žiadny polyp väčší ako 3,5 cm

Polyp endometria s atypickými črtami

- celulárna stróma, stromálna atypia, čudná architektúra
- non-diagnostické pre MAS
- klinický follow-up a kontrolný kyret o 6 mesiacov

Záver

- adenofibróm, ak existuje, z kyretu nie
- už od 1980 LG adenosarkóm a adenofibróm
= LG mixed Müllerian tumor
- pozor na rekurentný polyp !!! (Kerner, 1993)



d'akujem za pozornost'