

XX. Martinský biooptický seminár SD-IAP

14. -15. november 2014

KÚPELE LÚČKY, a.s. hotel Choč

Prípád SD-IAP č. 532

P. Bohuš; Medicyt, s. r. o. Košice

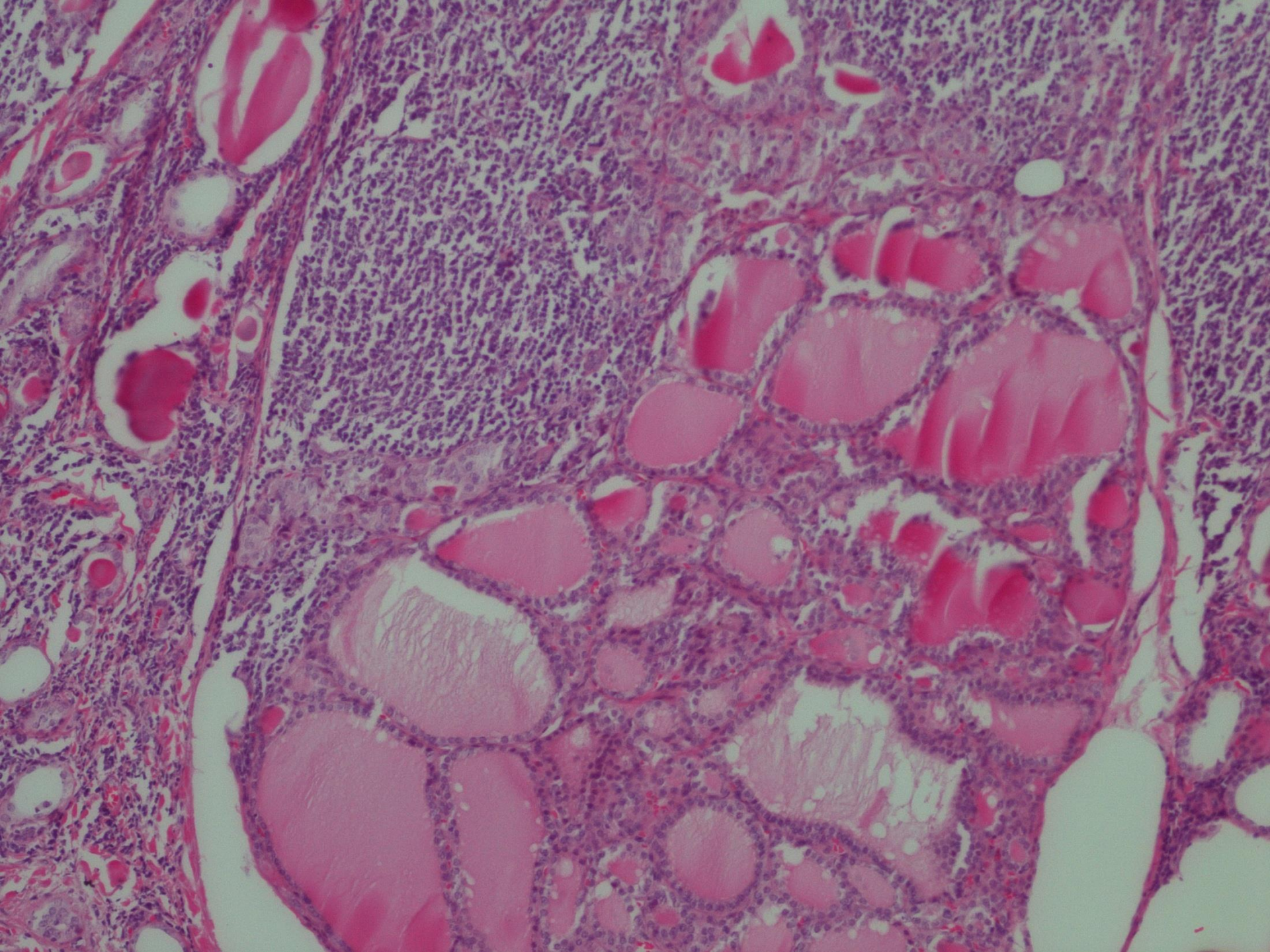
- 46-ročná pacientka s klinickou diagnózou difúznej strumy na autoimunitnom podklade, s uzlom priemeru cca 0,6cm v pravom laloku.

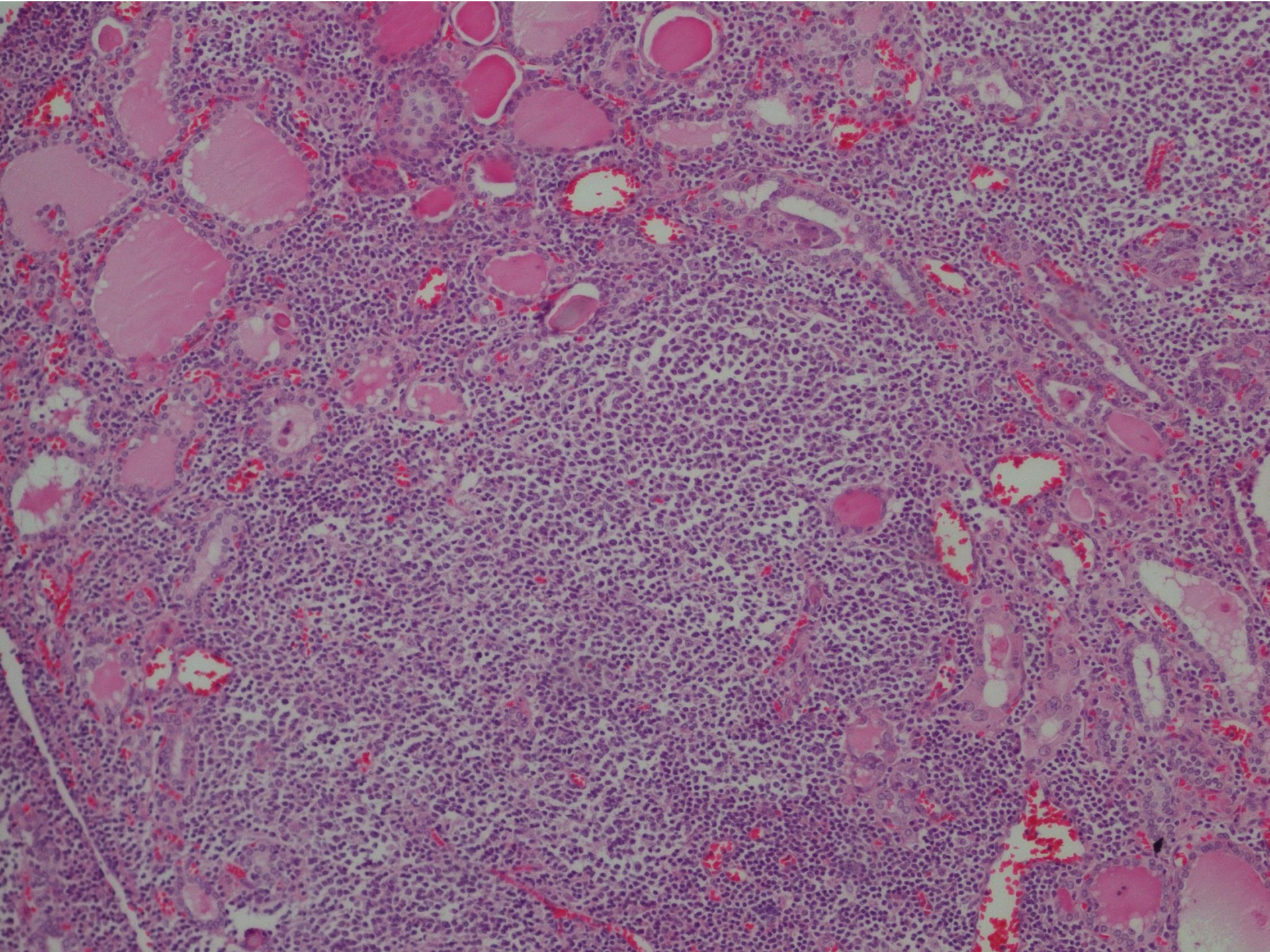
MAKROSKOPICKÝ OBRAZ

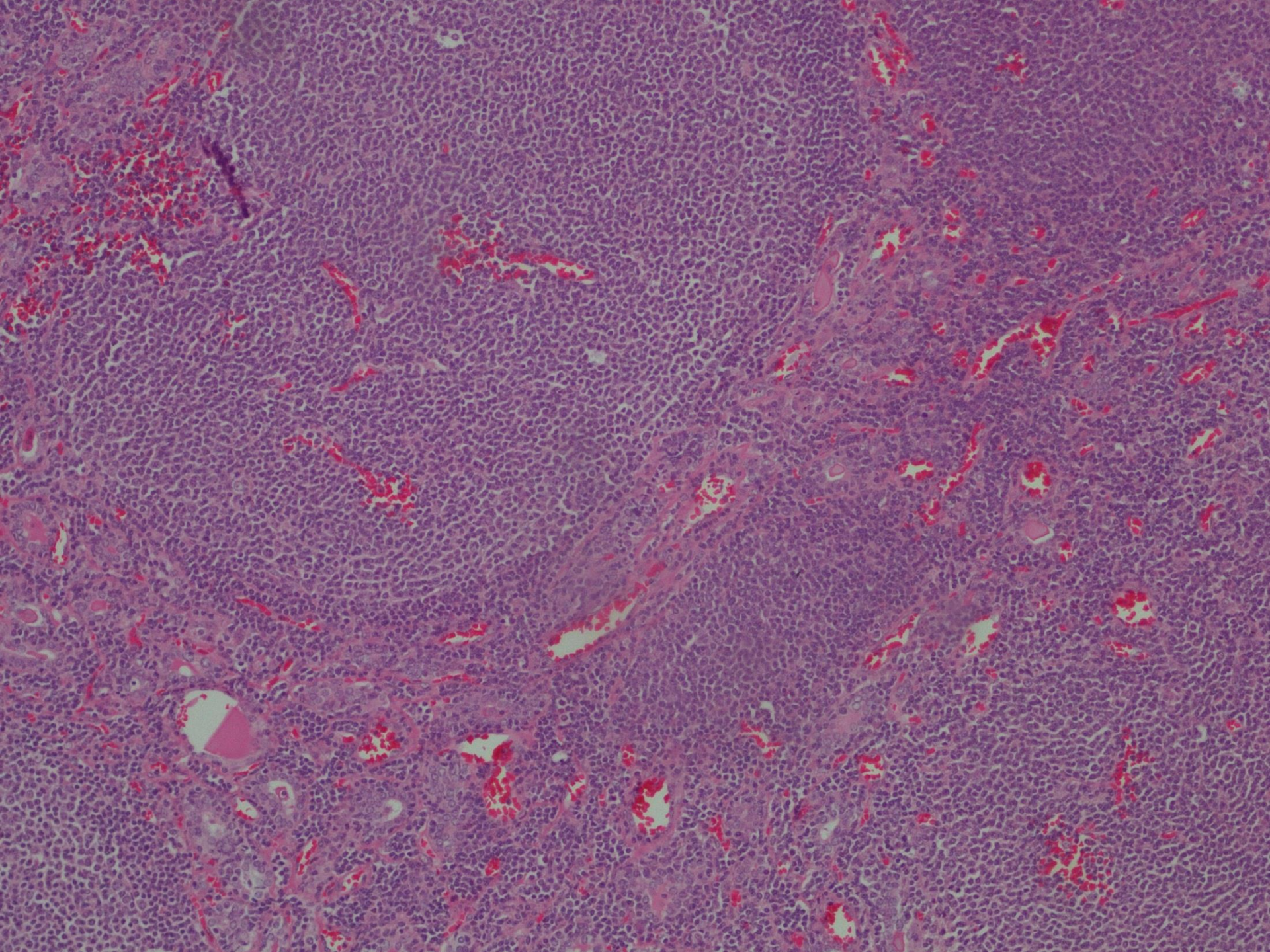
- Oba laloky ŠŽ zväčšené – do cca 10cm
- Tkanivo v takmer celom rozsahu žltobelavé, mäkké, lesklé, bez zrejmych ložiskových zmien
- Navyše samostatne zaslané viaceré fragmentované LU

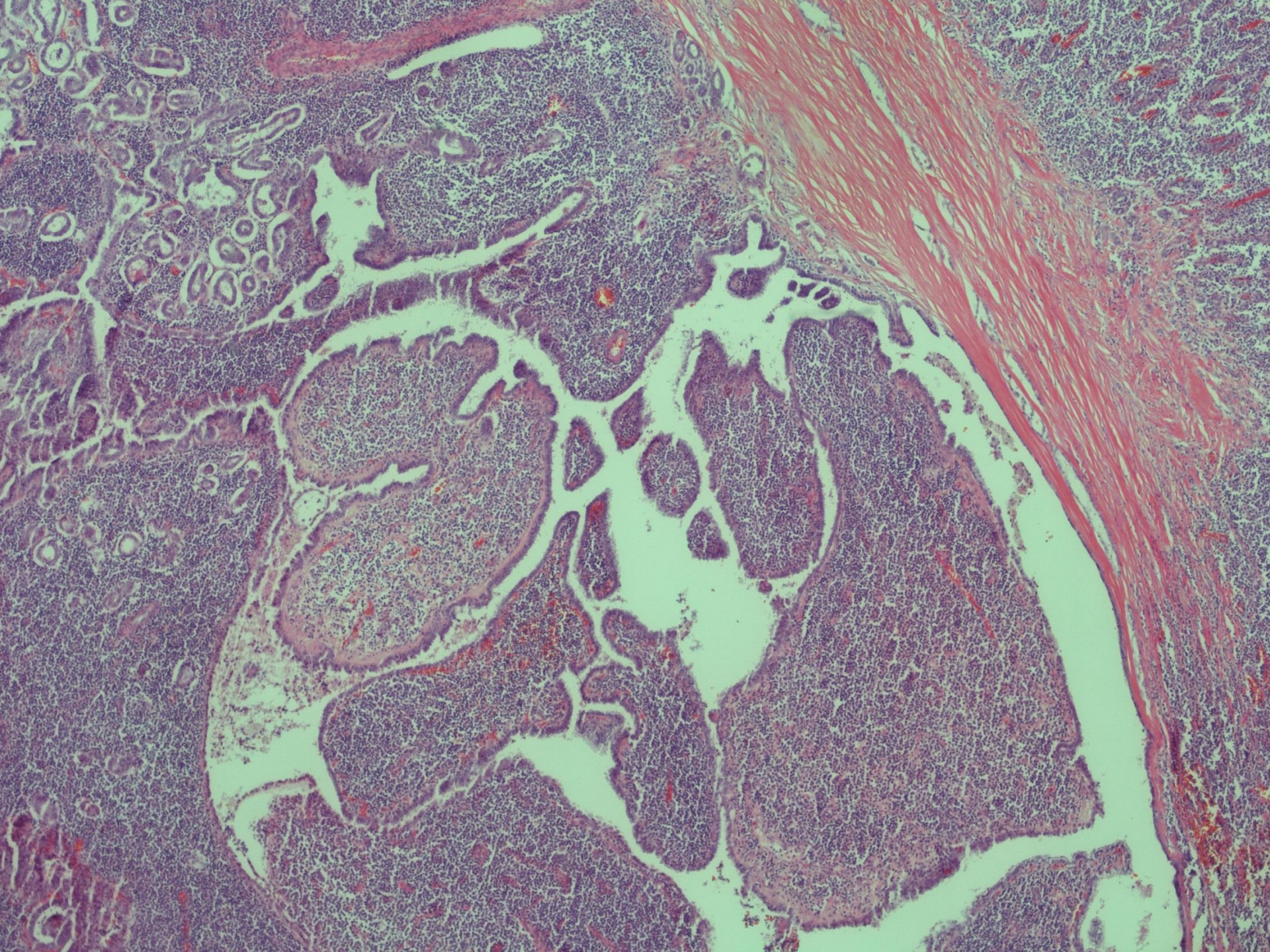
MIKROSKOPICKÝ OBRAZ

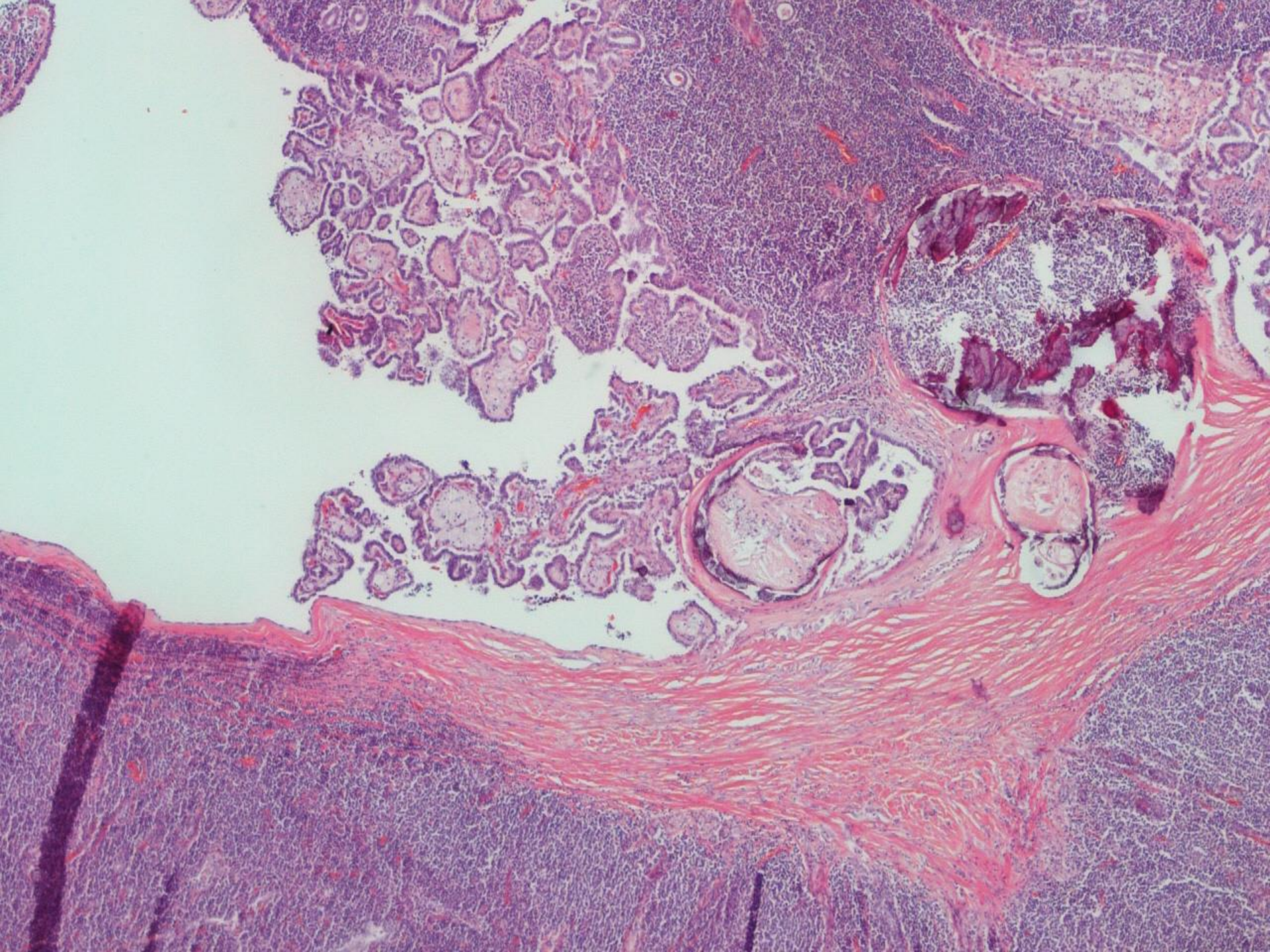
- Hashimotova tyreoiditída
- Fokálne vystupňovaná nodulárna lymfoproliferácia
- 1 uzol priemeru cca 0,8cm
- Štruktúra LU zotretá, lymfoproliferácia v perinodálnom tuku

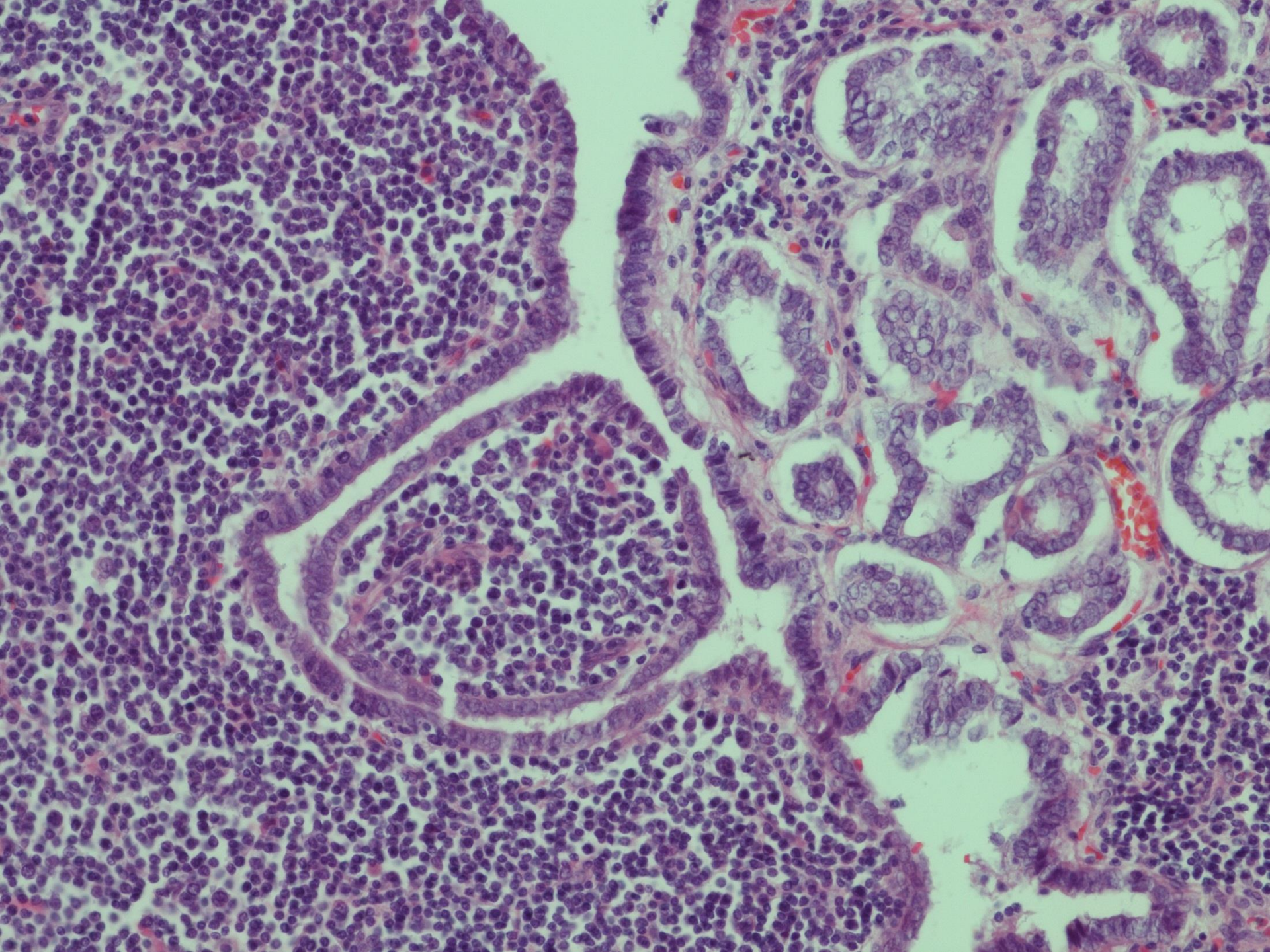


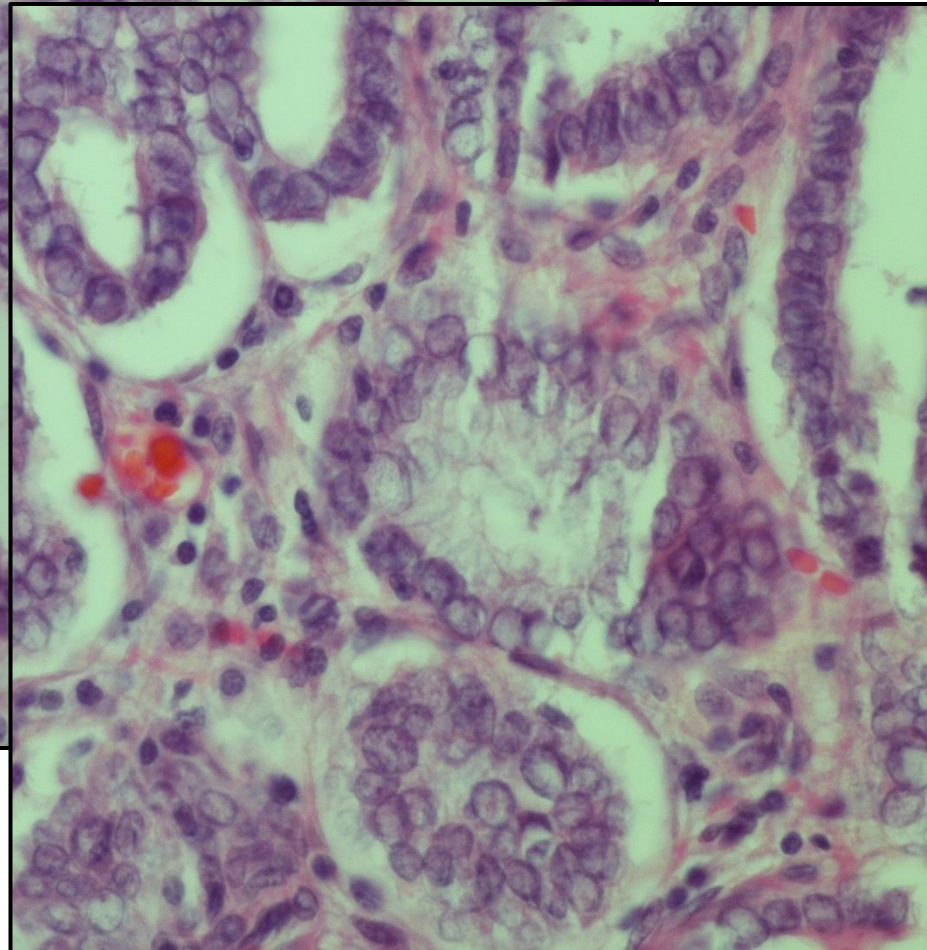
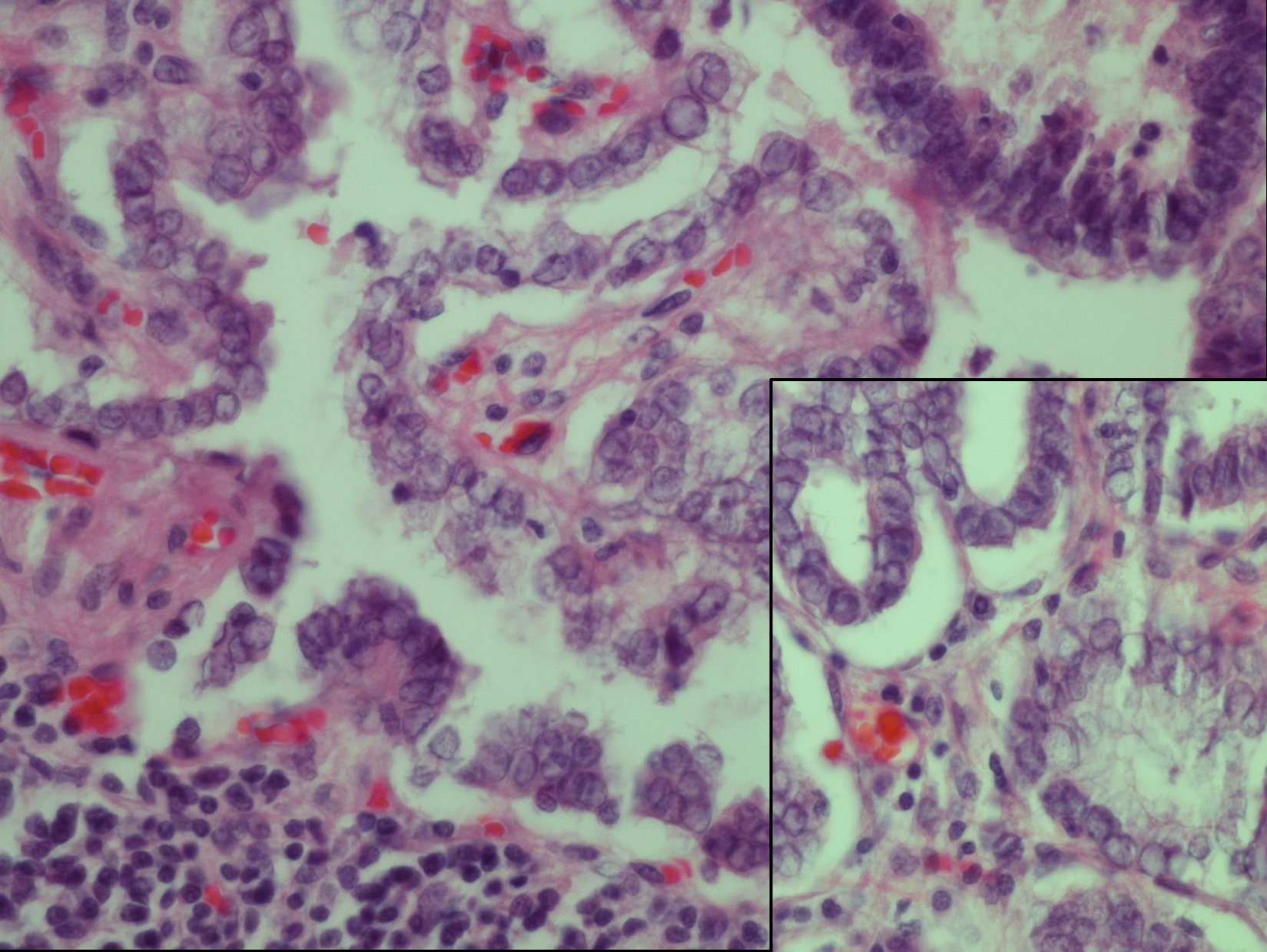




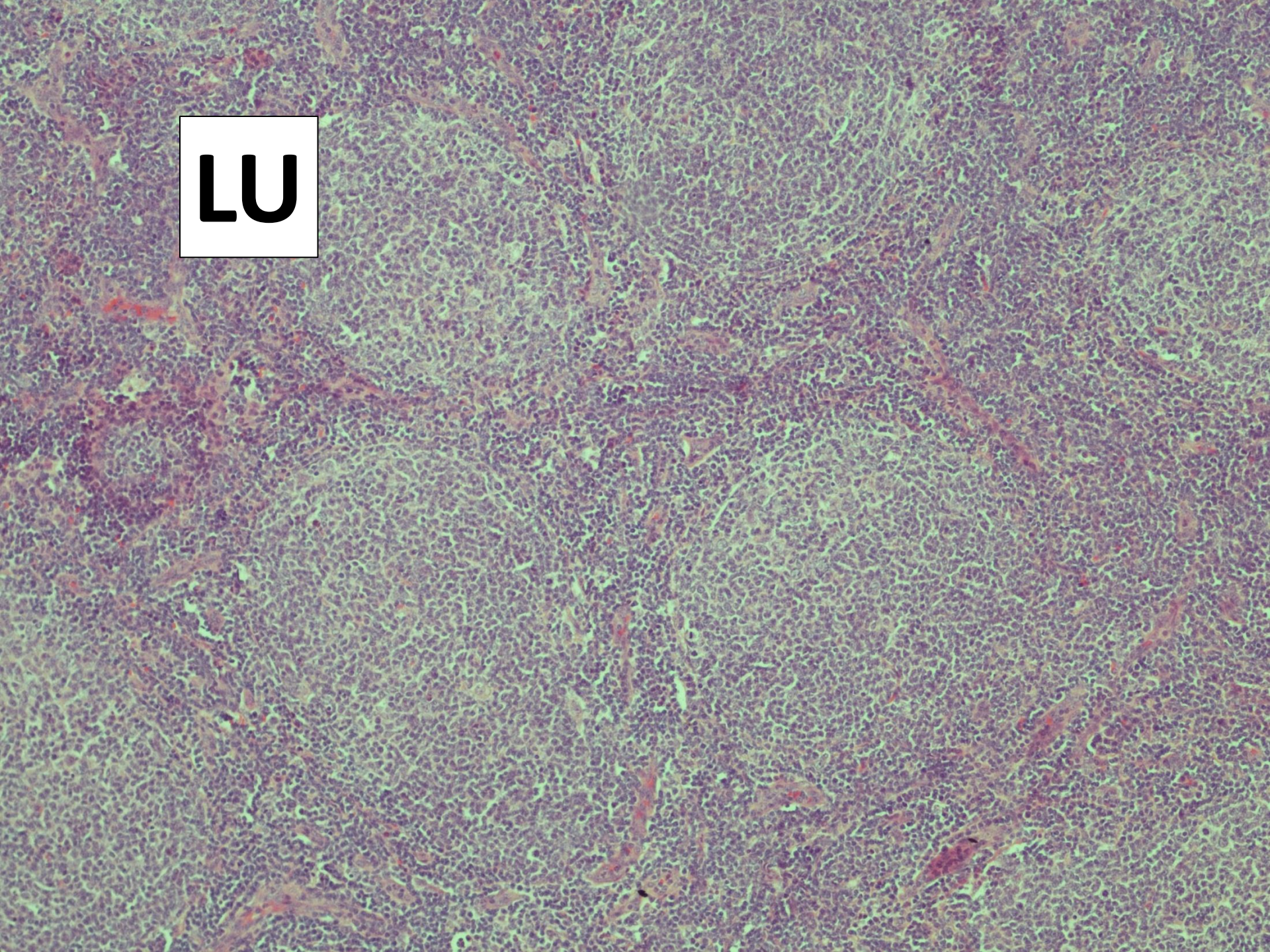


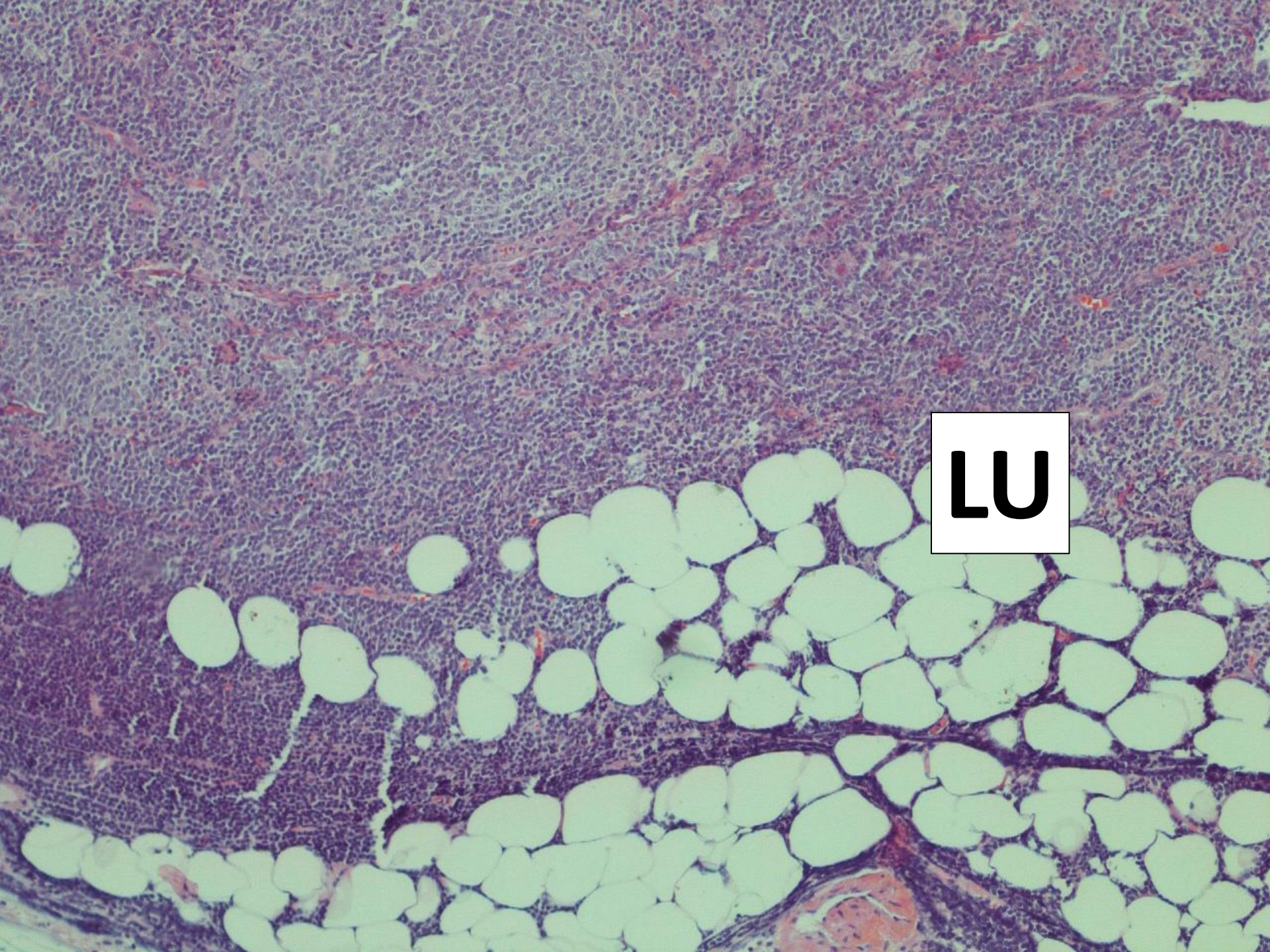




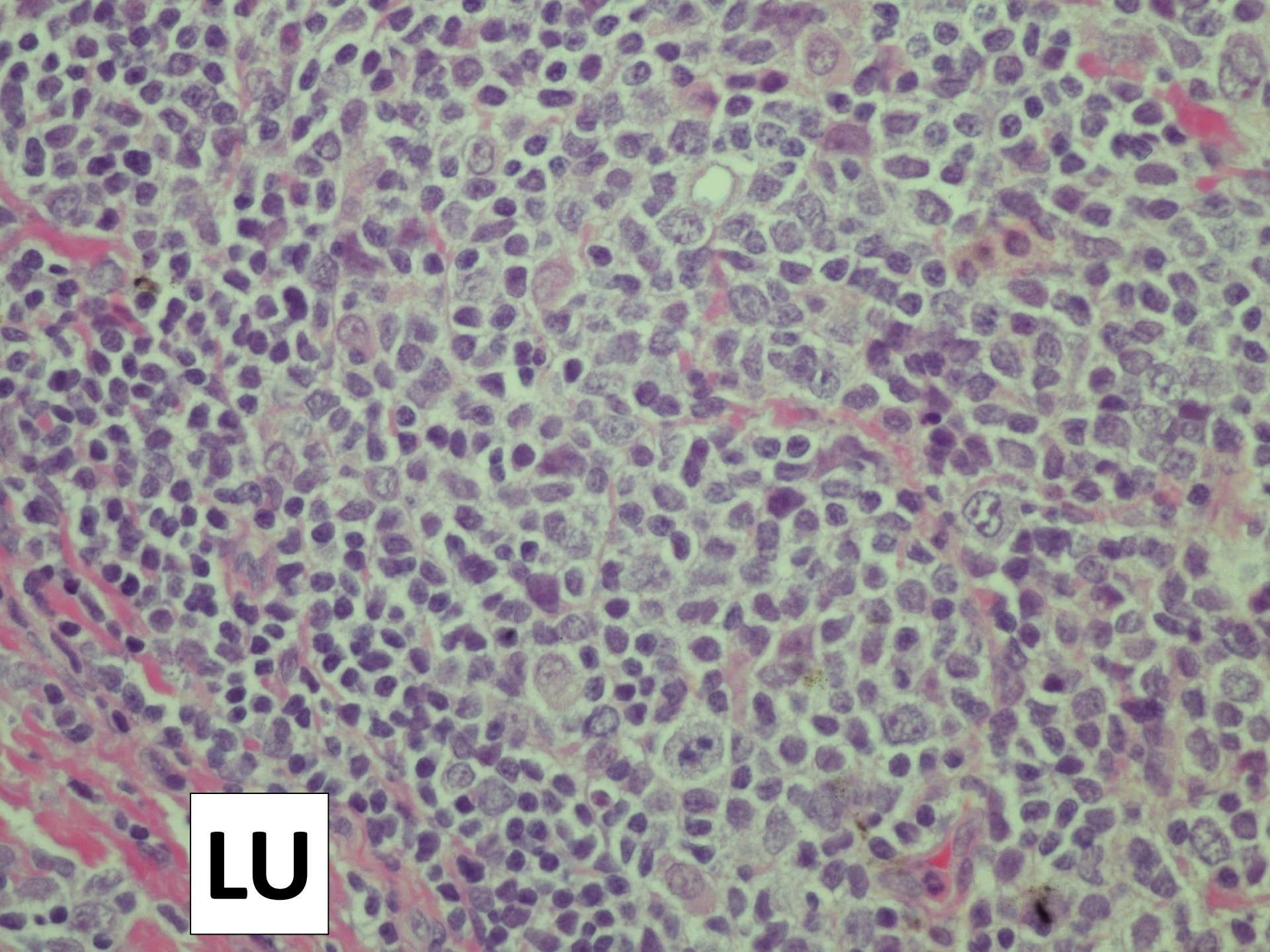


LU



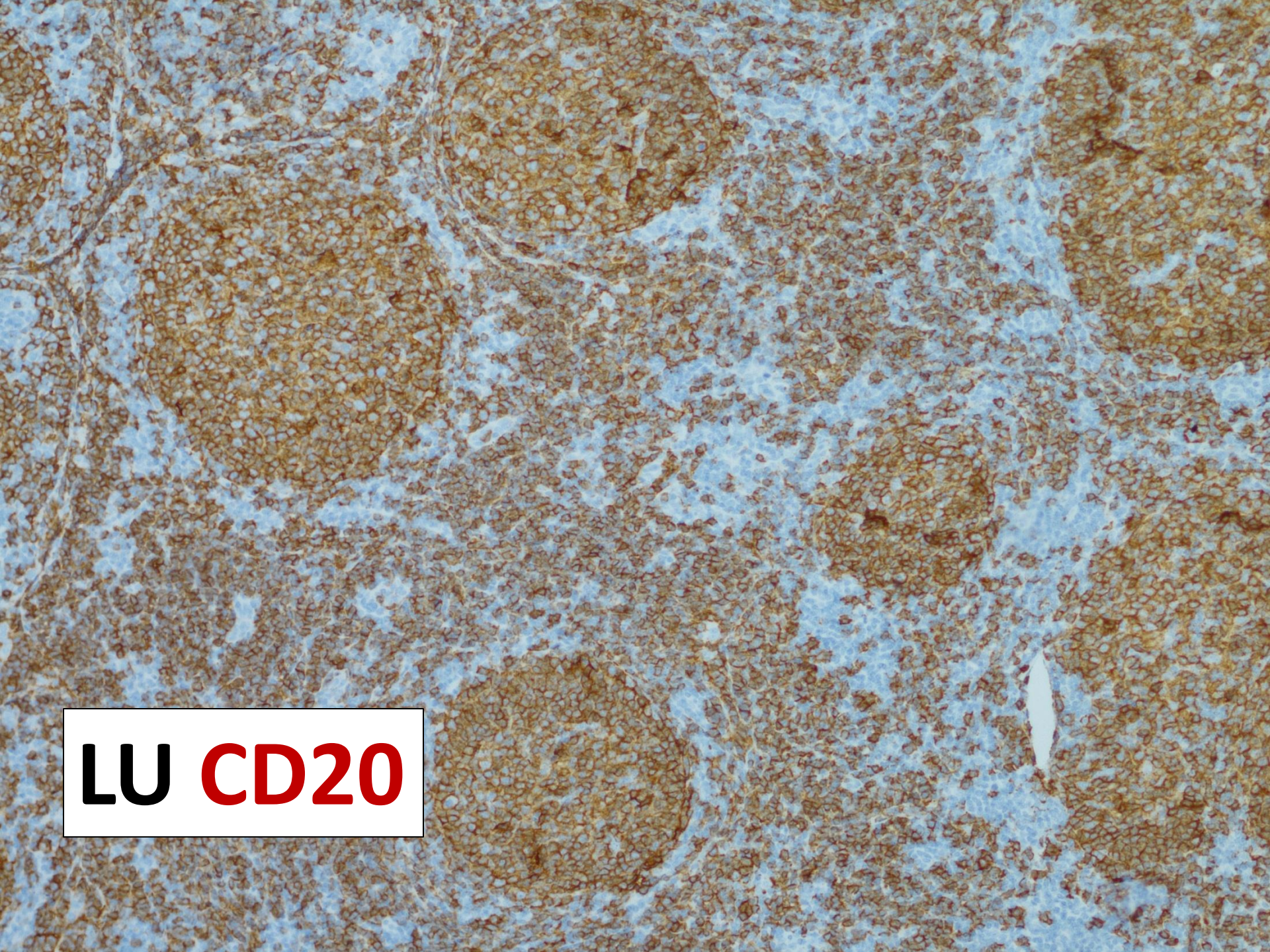


LU

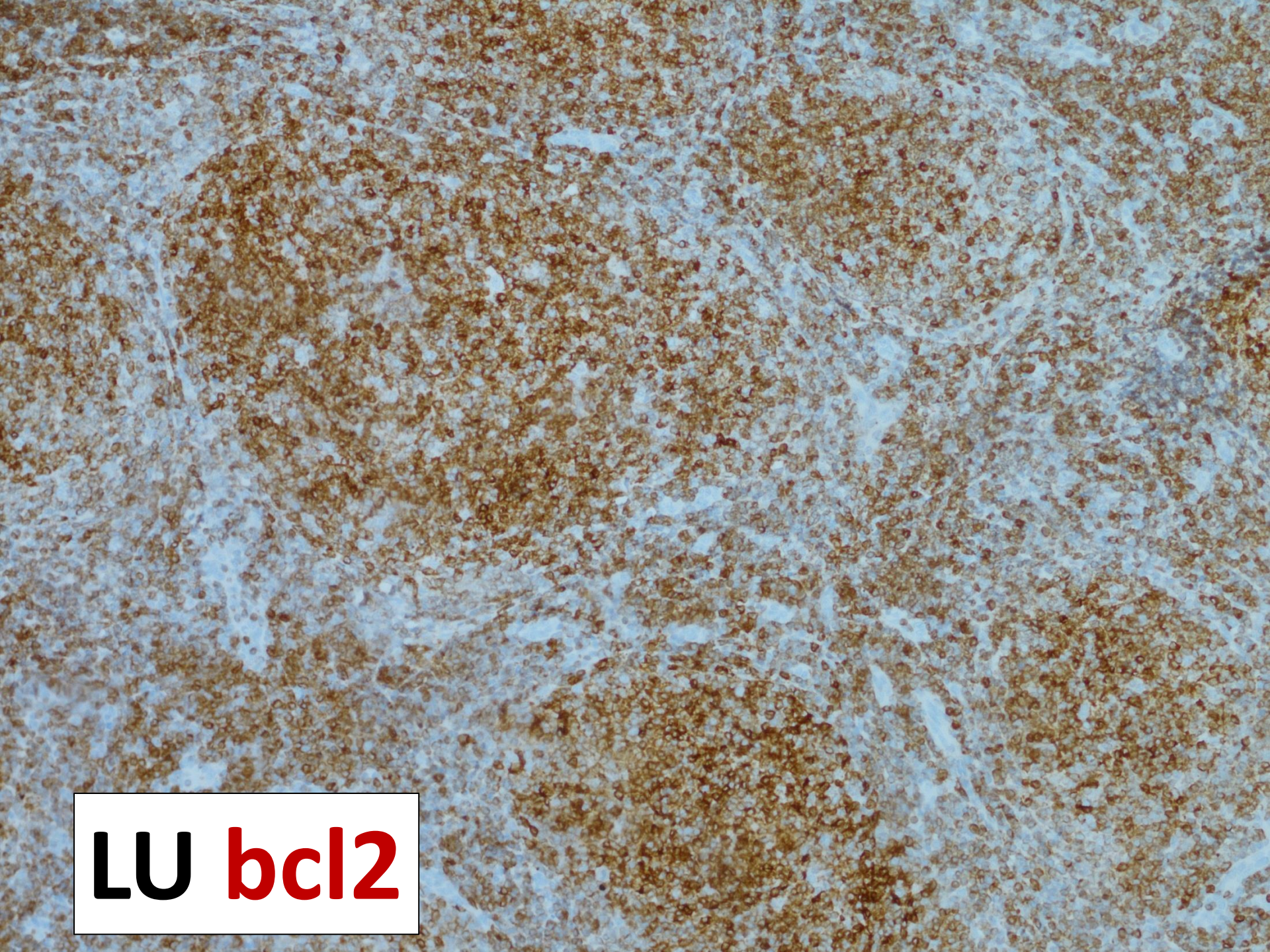


LU

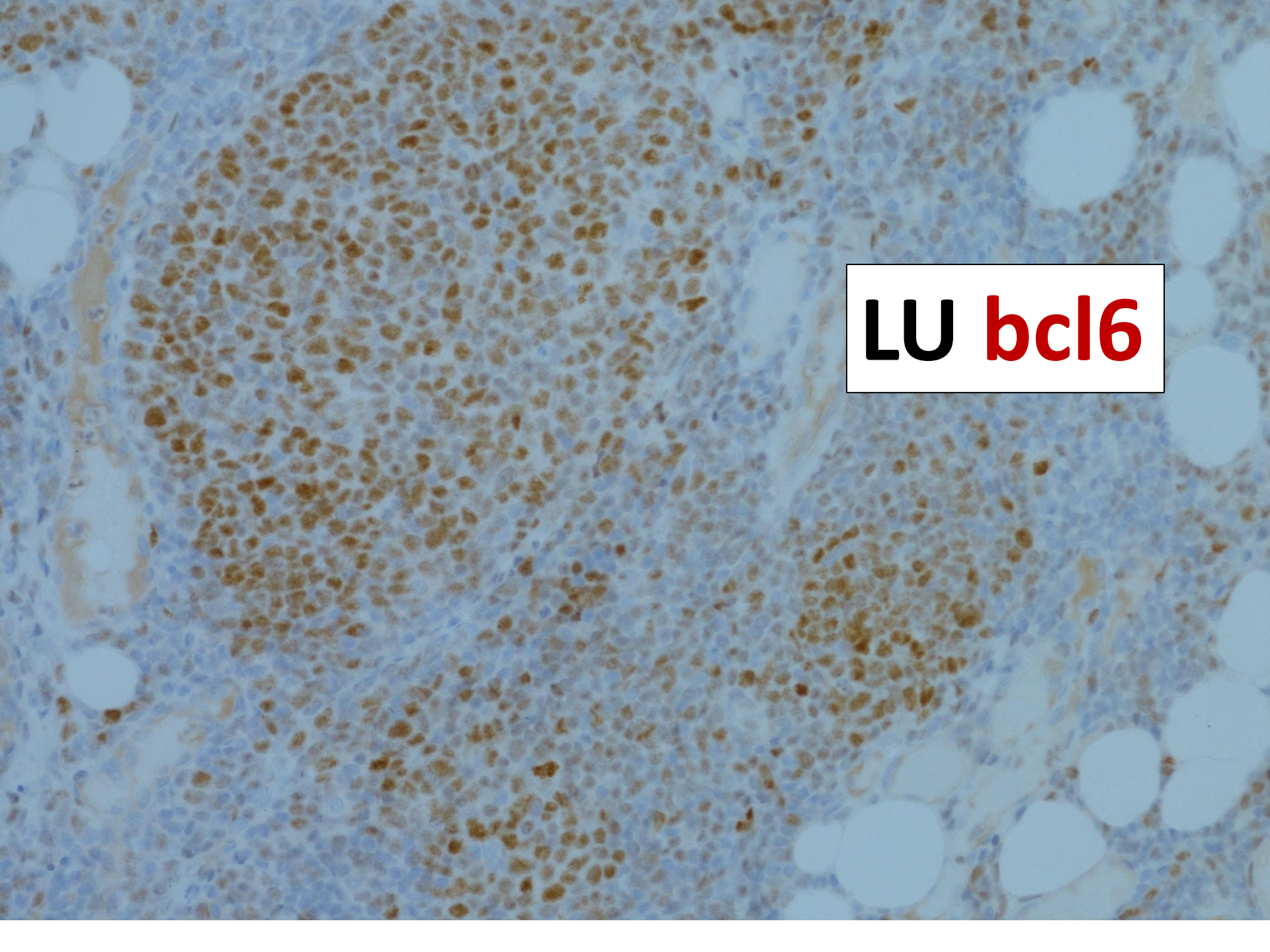
?



LU CD20

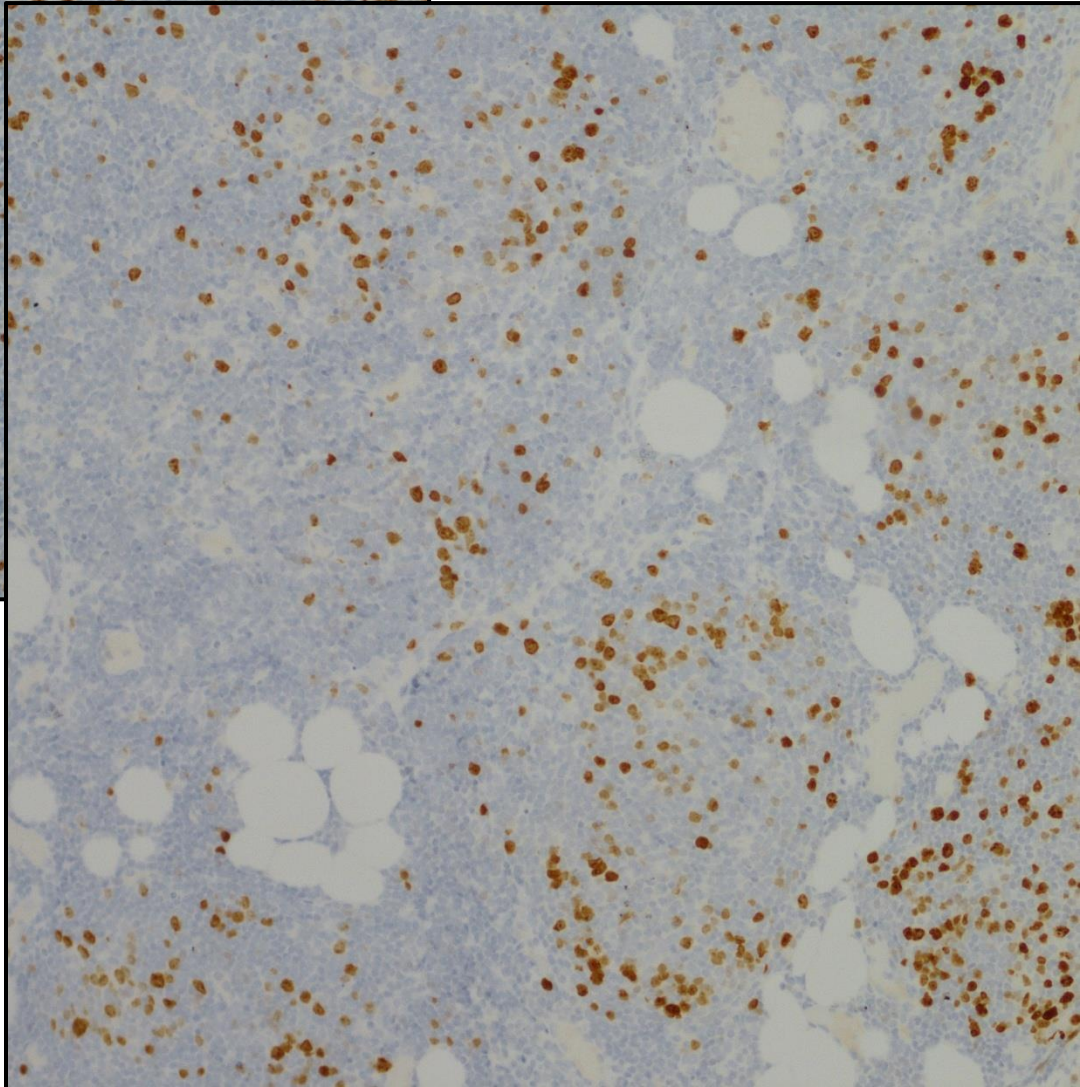
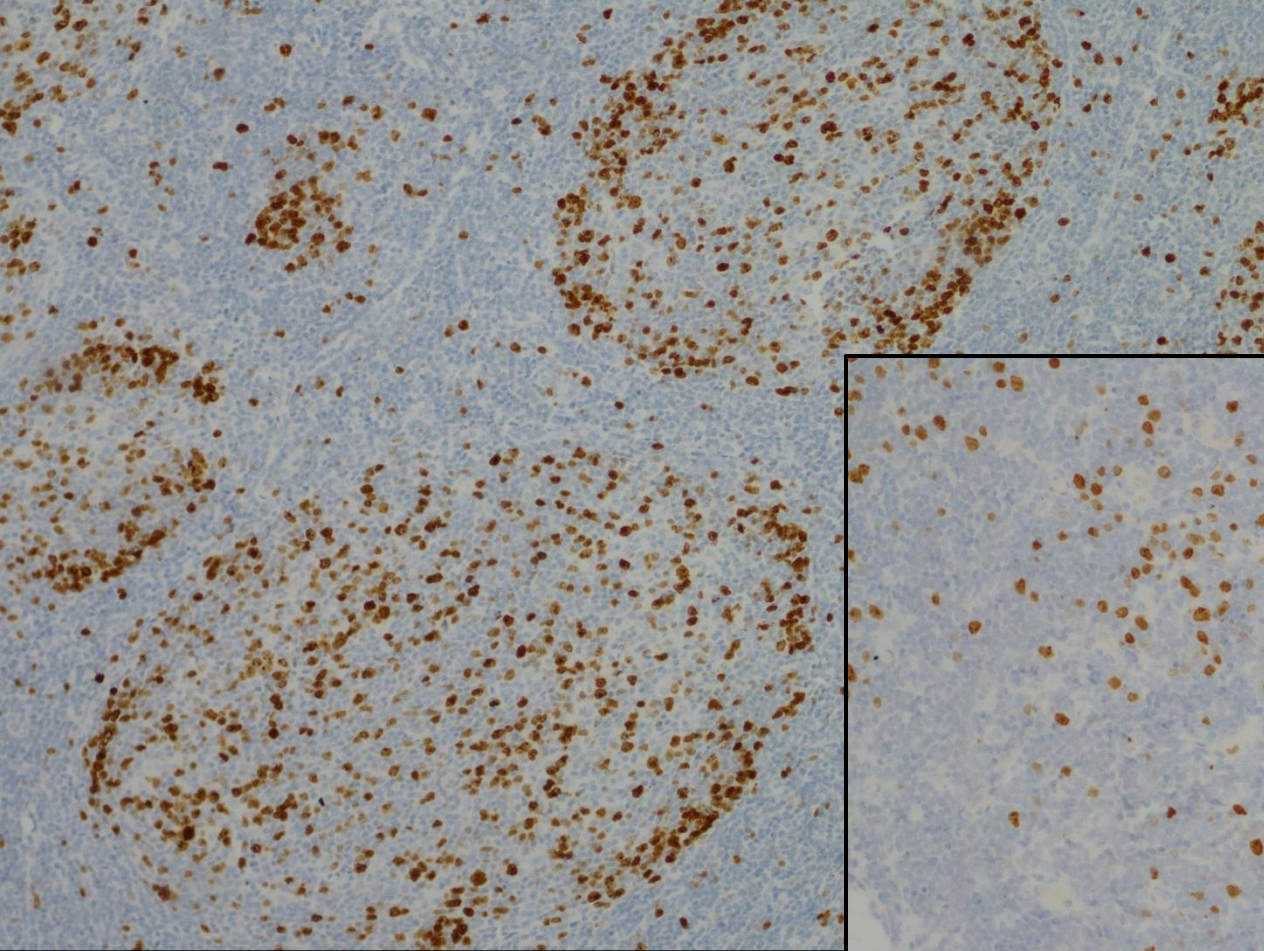


LU bcl2

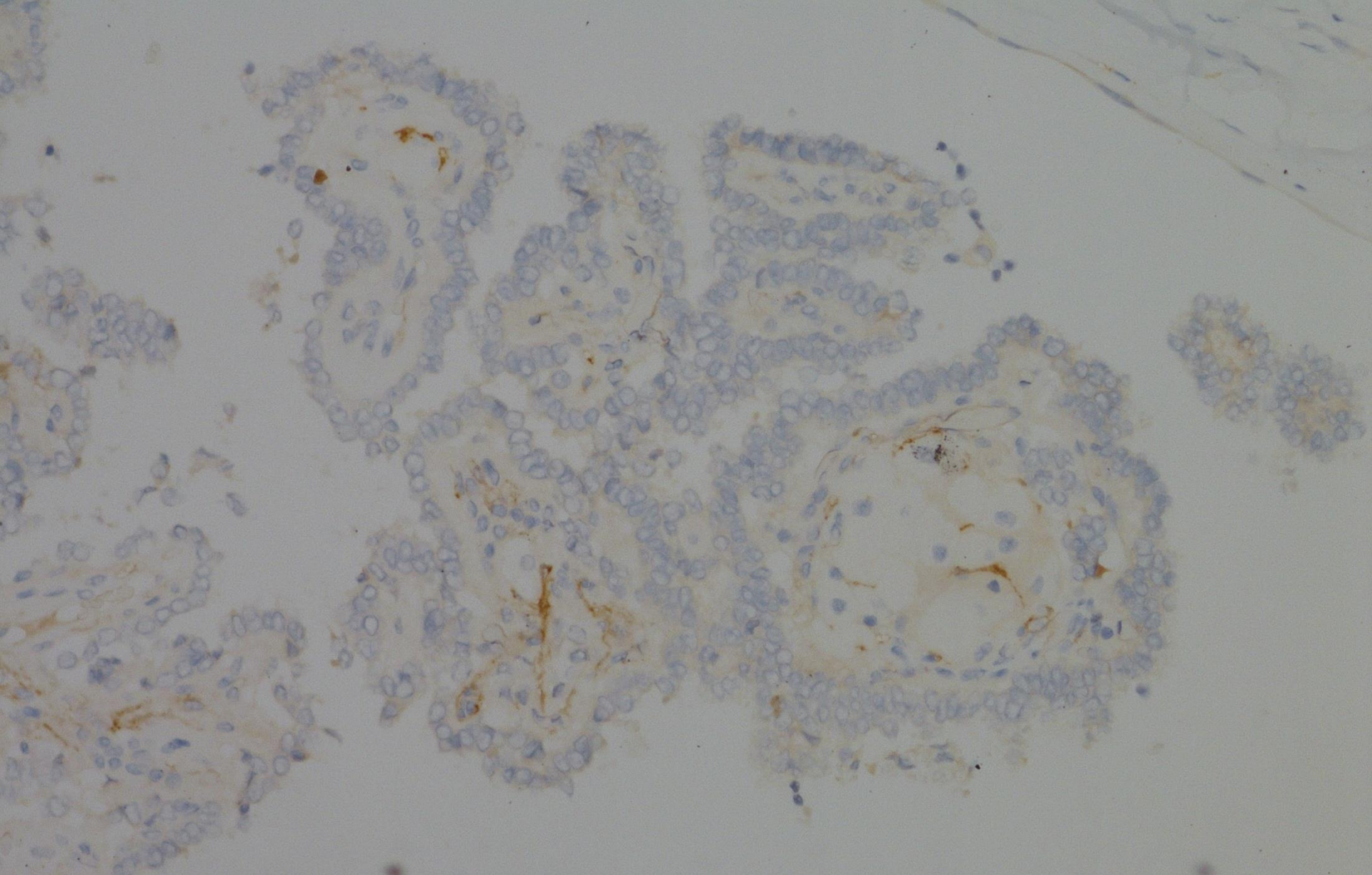


LU bcl6

LU CD10

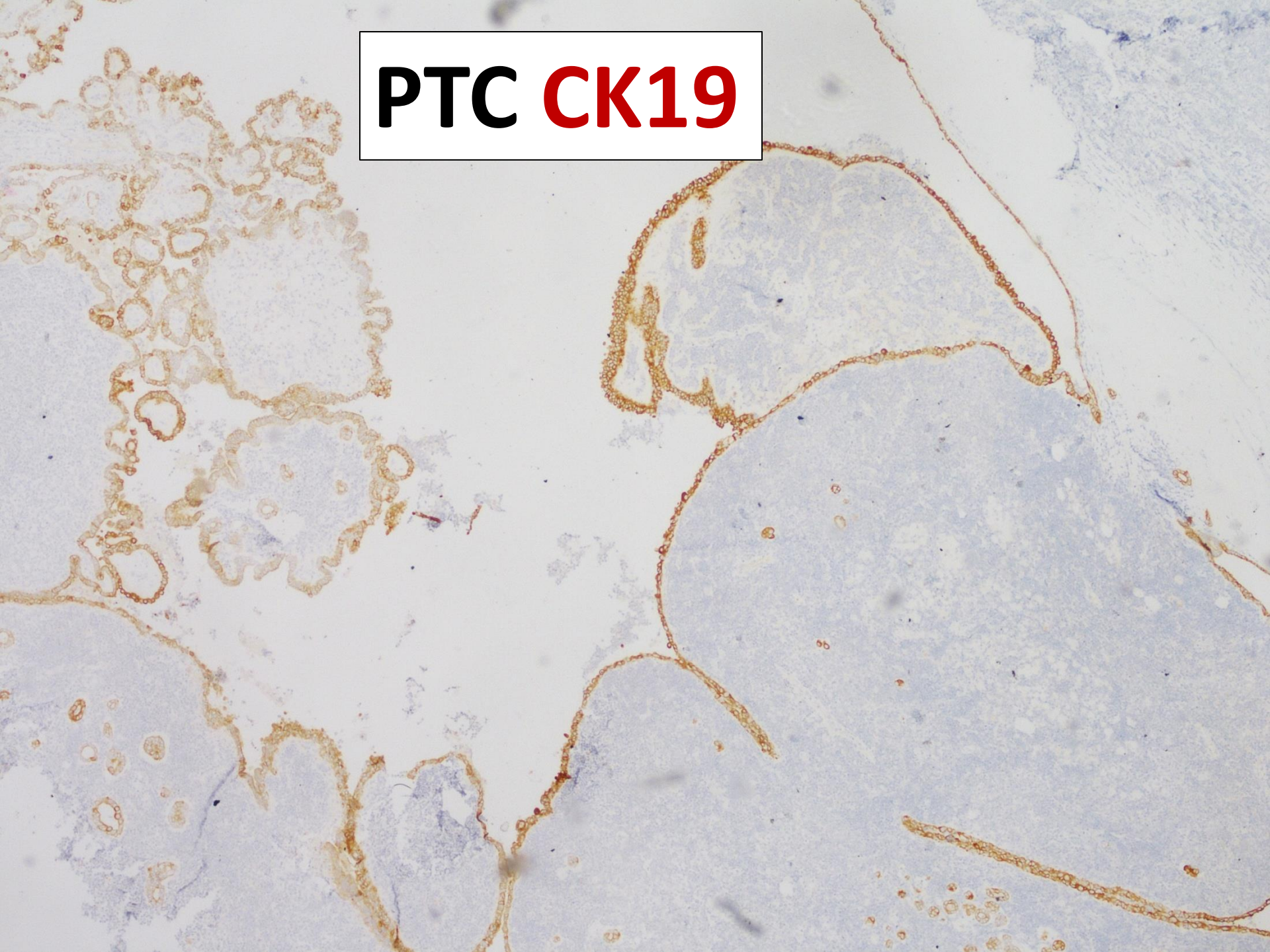


Ki67



PTC CD56

PTC CK19



A histological slide showing thyroid tissue stained for CK19. The image displays numerous thyroid follicles of varying sizes, each lined by a single layer of cuboidal epithelial cells. The follicles contain a clear, eosinophilic colloid. The brown staining highlights the cell membranes of the epithelial cells, demonstrating a strong and diffuse positive reaction for CK19. The nuclei of the cells are stained blue with hematoxylin. A white rectangular box with a black border is centered in the image, containing the text 'PTC CK19'.

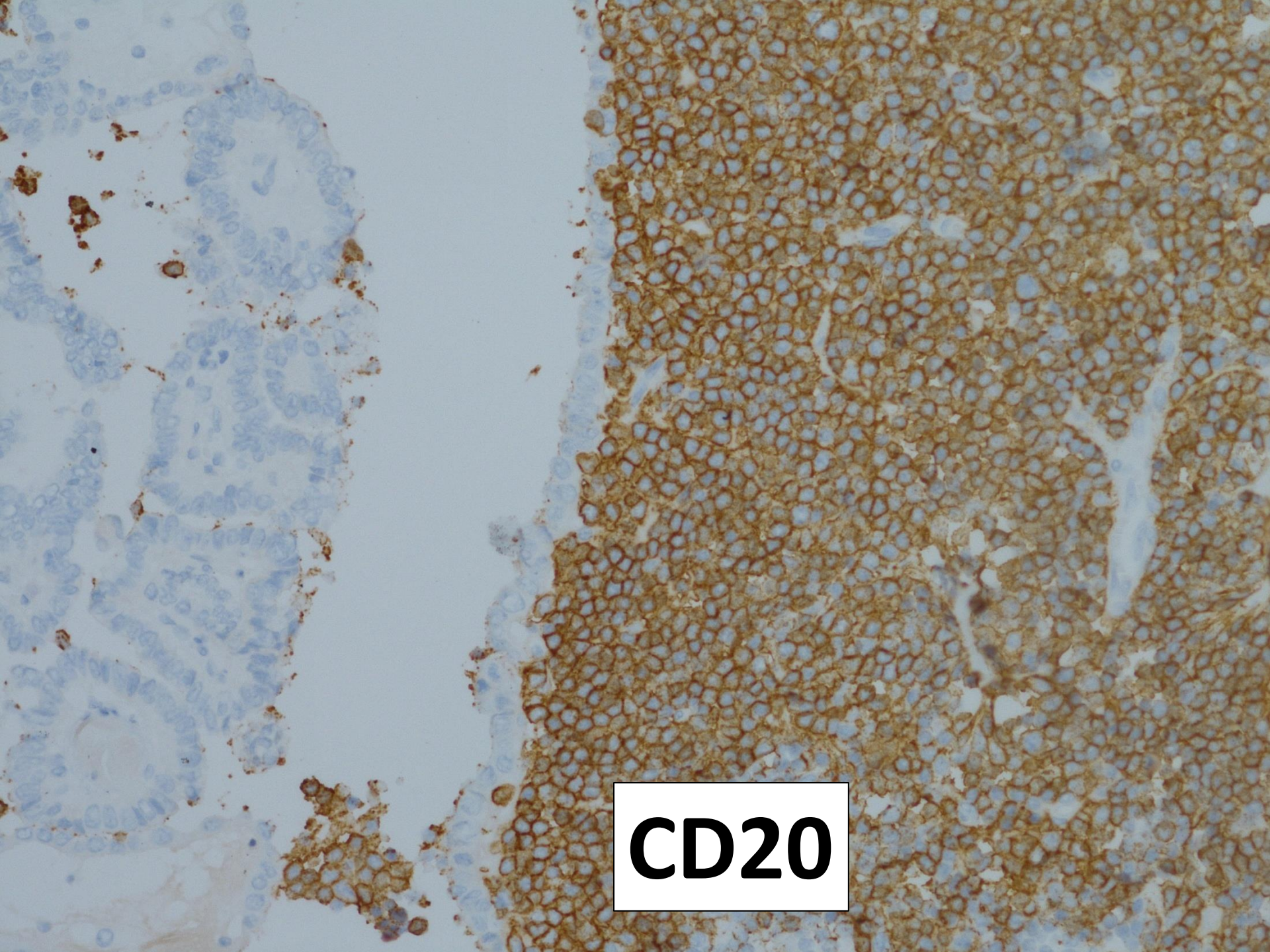
PTC CK19

The image shows a histological section of a papillary thyroid carcinoma (PTC) stained for galectin-3. The tumor cells are arranged in papillary structures with characteristic nuclear features. The brown staining indicates the presence of galectin-3, which is localized to the cytoplasm and cell membranes of the tumor cells. A white box with a black border contains the text 'PTC galectin3', where 'PTC' is in black and 'galectin3' is in red.

PTC galectin3

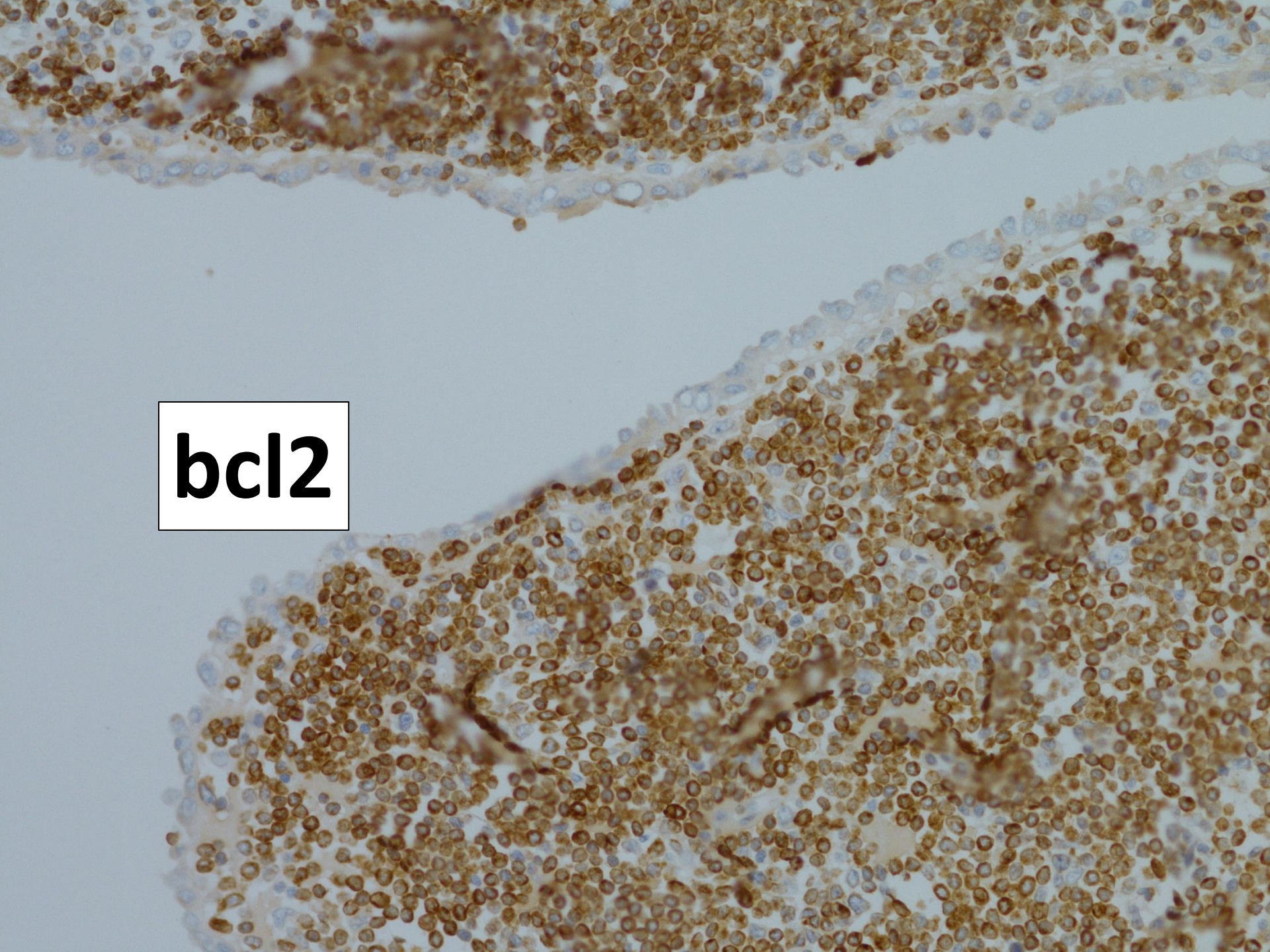
A histological slide showing thyroid tissue stained for HBME1. The tissue consists of several follicles of varying sizes. The follicular epithelium is stained brown, indicating a positive result for HBME1. The follicles contain a pale, granular colloid. The nuclei of the epithelial cells are stained blue. A white box with a black border is overlaid on the lower-left portion of the slide, containing the text 'PTC HBME1'.

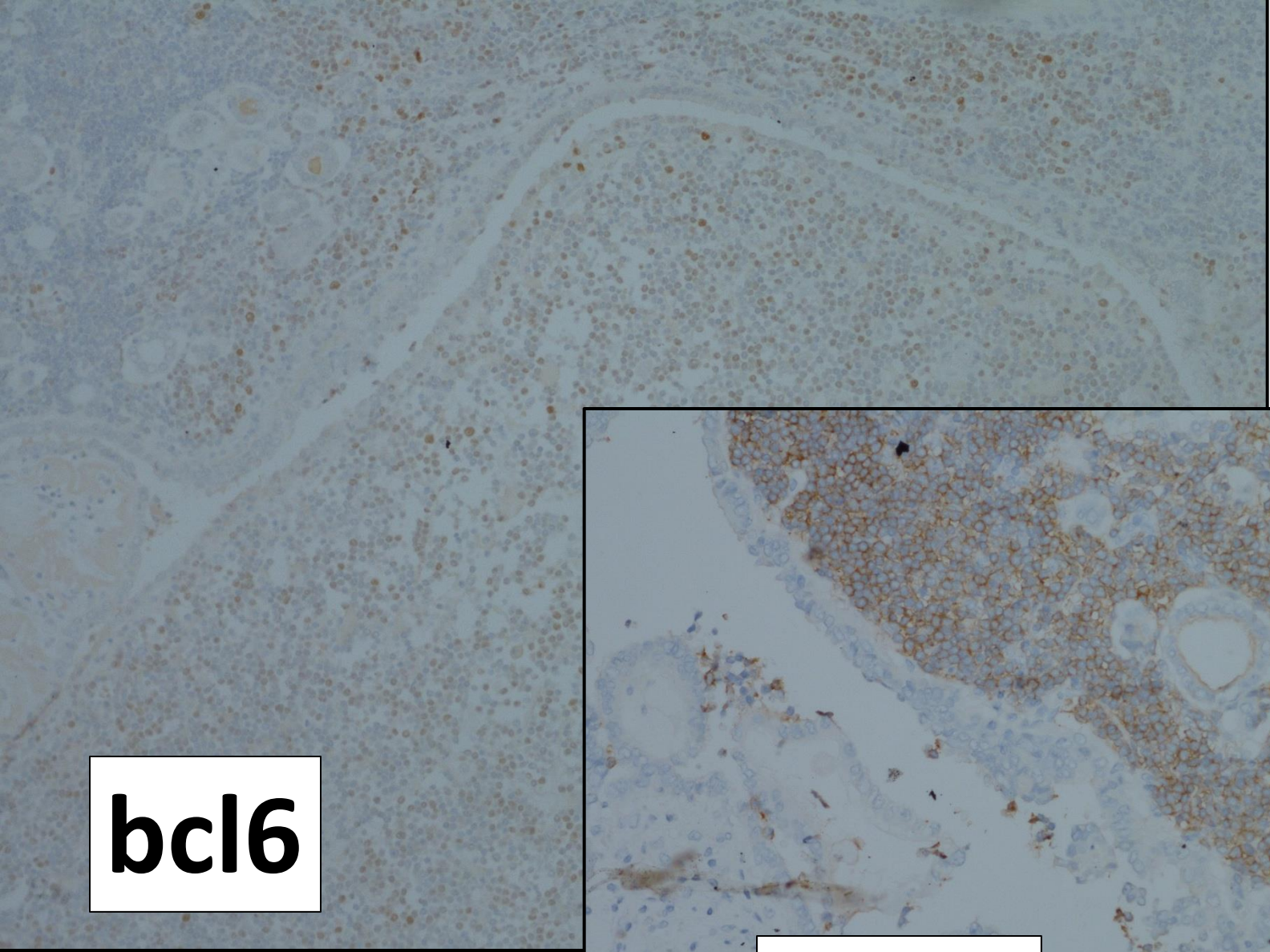
PTC HBME1



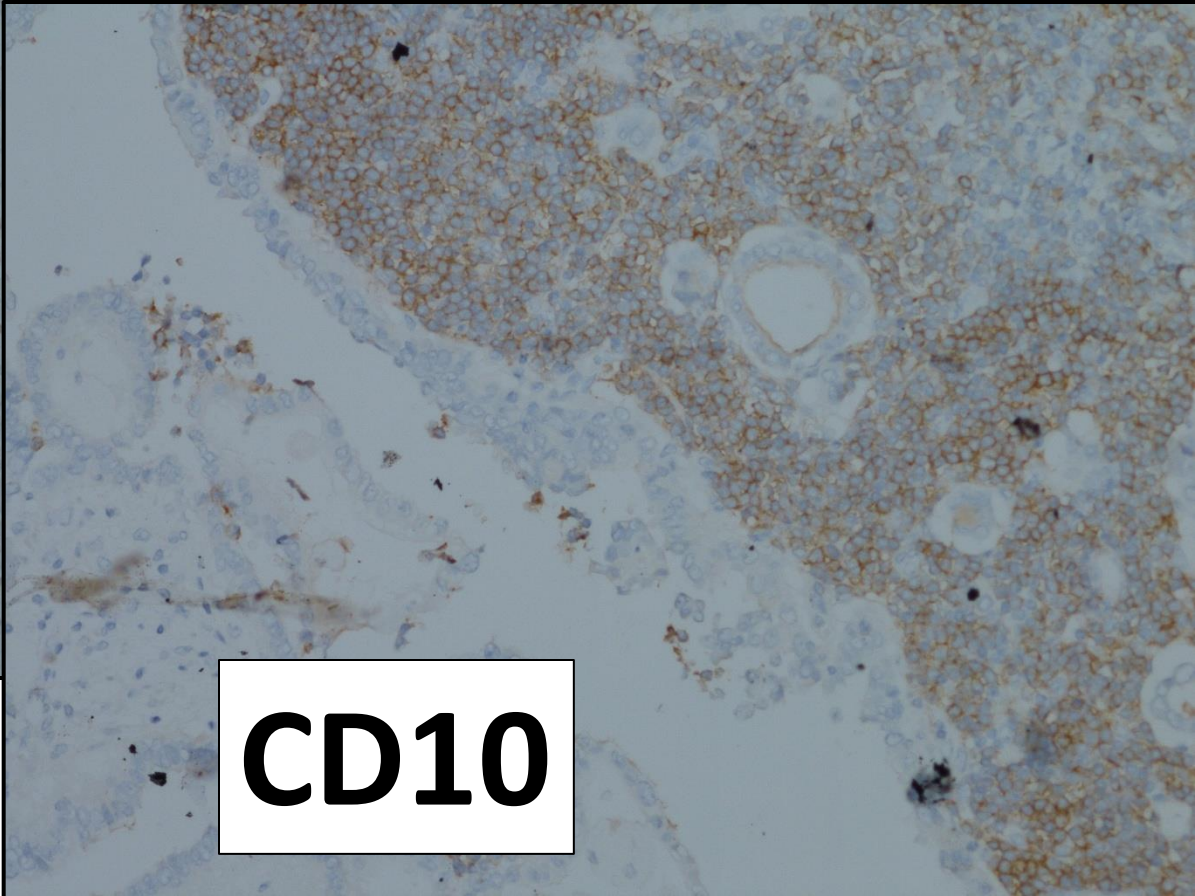
CD20

bcl2






bcl6



CD10

IHC

Uzol ŠŽ (PTC)

- CK19+
- HMBE1+
- Galectin3+
- CD56-
- v stróme identický
lymfóm 

LYMFÓM

- CD20+
- Bcl2+
- Bcl6+
- CD10+
- CD3-
- CD5-
- CD43-
- CD23-
- Ki67 20-30%

?

ZÁVER PATOLÓGA

- Totálna thyreoidectomia s blokovými resekátmi. Štítna žľaza i regionálne LU infiltrované štruktúrami **FL G1**, 1x intraparenchymatózny **microPTC** - bez metastáz v LU. Navyše v zachovalých partiách prítomná Hashimotova tyreoiditída.
- -----
Poznámka: Domnievame sa, že sa jedná o nodálny FL so sekundárnym postihnutím thyreoidey. **Uvítame prípadnú spätnú informáciu o výsledkoch hematatoonkologického vyšetrenia**

Prečo sme favorizovali nodálny FL so sekundárnym postihnutím thyreoidey?

- 1.) „konvenčné“ IHC: bcl2+, bcl6+, CD10+
- 2.) Odstredivý/centrifugálny charakter rastu (viac v okolitých LU ako v ŠŽ)

KOLÍZNY TUMOR

FL+PTC

- Prítomnosť 2 odlišných novotvarov na 1 mieste (v 1 orgáne)
- ...TU synchronne; simultánne; konkurentné...

DIFERENCIÁLNA DIAGNÓZA

PTC

- *Dfdx teoreticky pri malom limitovanom materiáli*
- Warthin-like variant PTC

FL

- Hashimotova tyreoiditída
- Iný NHL ...MZL/MALT
- Primárny extranodálny tyreoidálny FL

Primárne lymfómy thyreoidey

- 5% novotvarov thyreoidey
- 7% extranodálnych lymfómov

- 50-80% DLBCL
- 20-30% MZBCL – MALT typu
- <12% FL

Histopathology. Apr 2006

Update on extranodal lymphomas.

Conclusions of the Workshop held by the EAHP and the SH in Thessaloniki, Greece

22 pacientov s FL prezentujúcim sa v ŠŽ

- 16/22 CD10+
- 22/22 bcl6+
- 9/22 bcl2-
- 11/22 translokácia *IGH/BCL2*

- *Morfologická podobnosť s MALT-lymfómom - nápadná interfolikulárna expanzia, LEL*

- *...“pravé“ primárne FL ŠŽ – črty spoločné s MALT-lymfómami...?*
- *...cca 50% primárnych thyreoideálnych DLBCL je CD10+ (GC typ)*
- *...konsenzus len taký, že ...primárne FL ŠŽ **existujú***

„konvenčný“ FL

- Novotvar tvorený bunkami zárodočného centra LU (centrocyty a centroblasty)
- Aspoň parciálne vykazuje folikulový rast.....

Table 10.11 Follicular lymphoma grading.

Grading	Definition
Grade 1-2 (low grade)	0–15 centroblasts per hpf
1	0–5 centroblasts per hpf
2	6–15 centroblasts per hpf
Grade 3	>15 centroblasts per hpf
3A	Centrocytes present
3B	Solid sheets of centroblasts
Reporting of pattern	Proportion follicular
Follicular	>75%
Follicular and diffuse	25–75%*
Focally follicular	<25%*
Diffuse	0%*

Diffuse areas containing >15 centroblasts per hpf are reported as diffuse large B-cell lymphoma with follicular lymphoma (Grade 1–2, Grade 3A or Grade 3B)*.

FOLLOW UP

- DG máj 2014
- TLF patológ-klinik október 2014 (o 4 mesiace)
-“trepanobiopsia KD – 30% infiltrácia FL“
-“po R-CHOP terapii zmenšenie intraabdominálnych a retroperitoneálnych LU/tumoróznych más“

Ďakujeme za pozornost