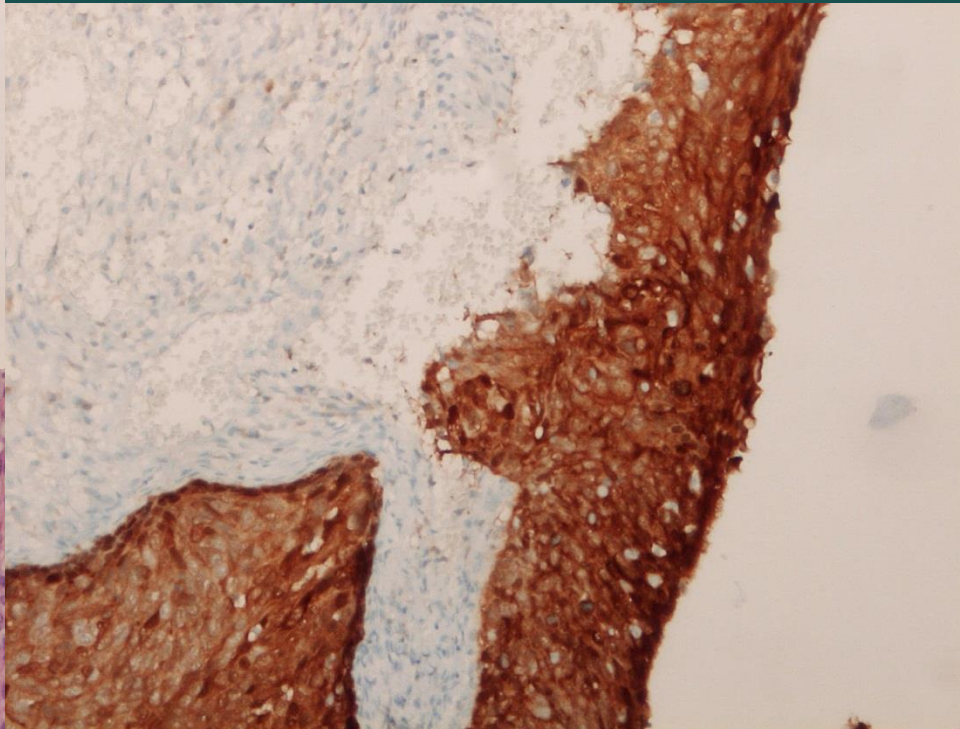
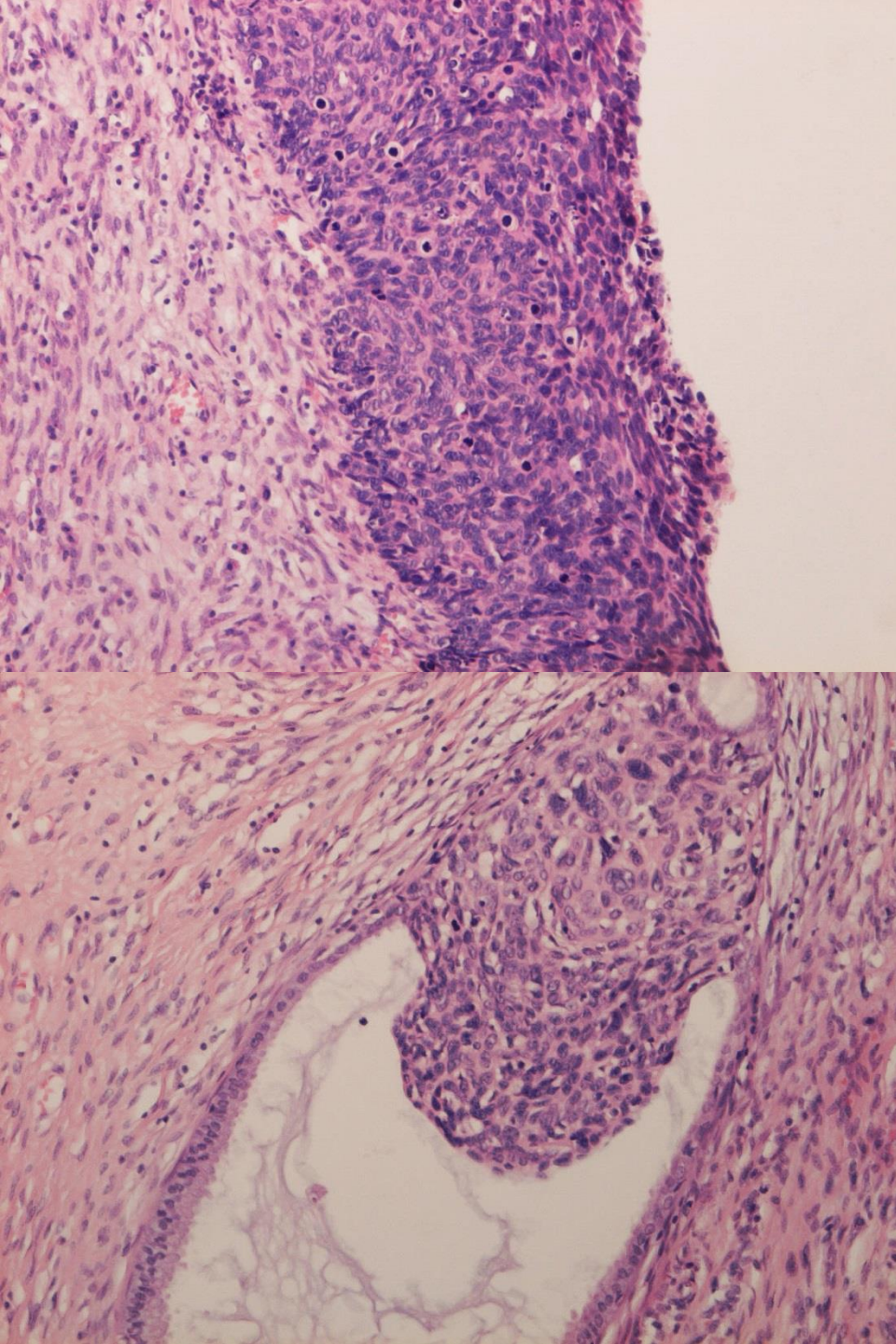


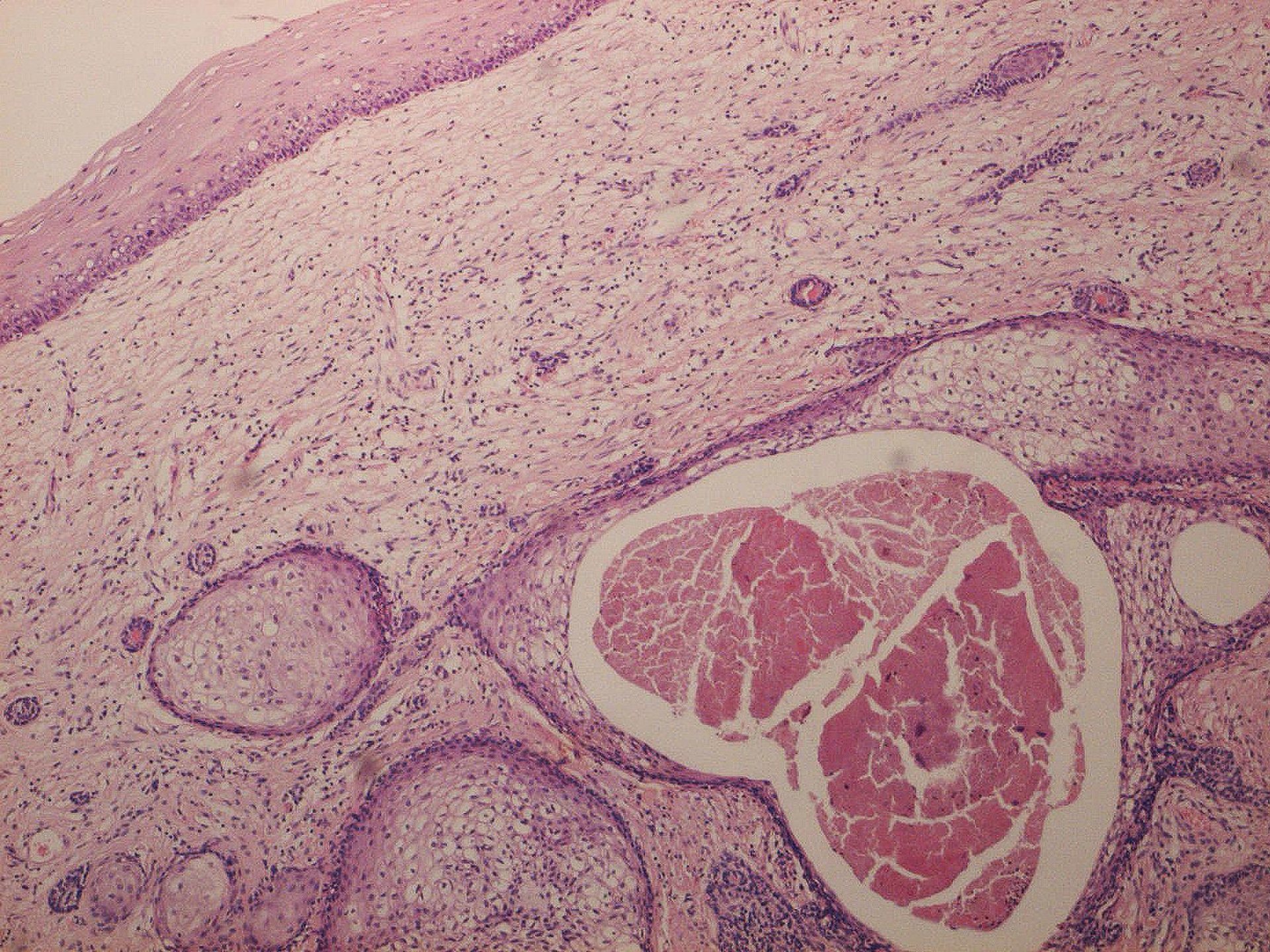
Prípád SD-IAP č. 493

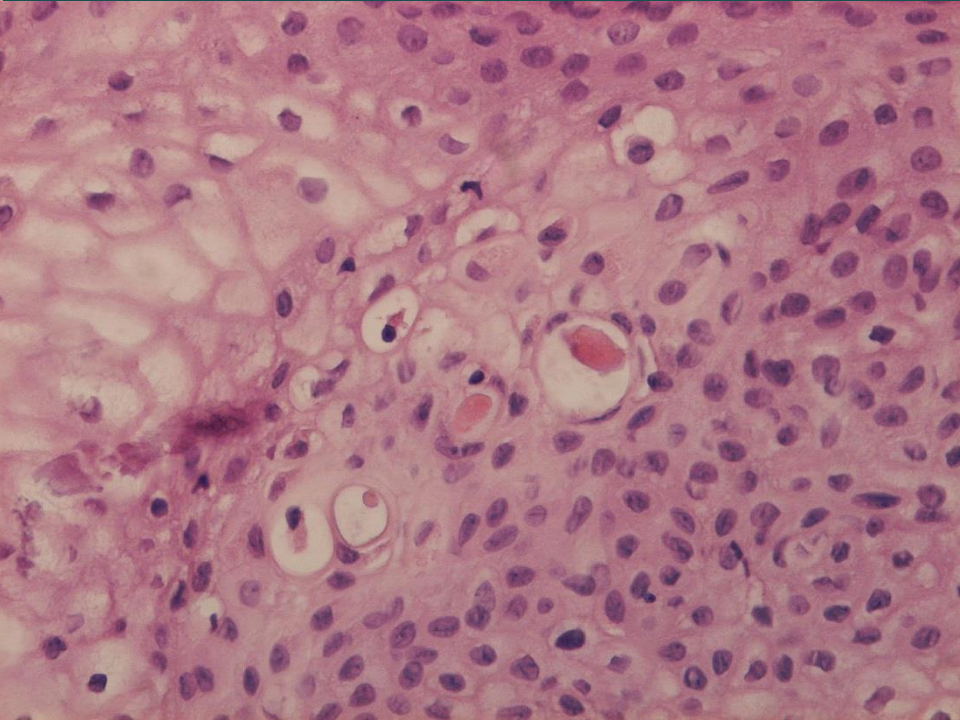
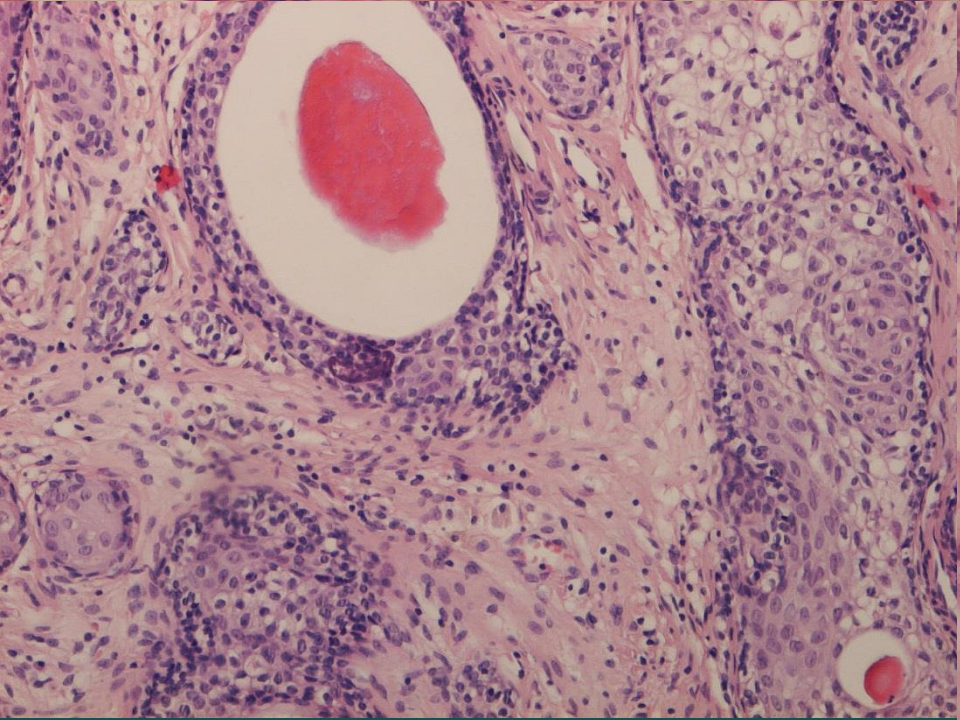
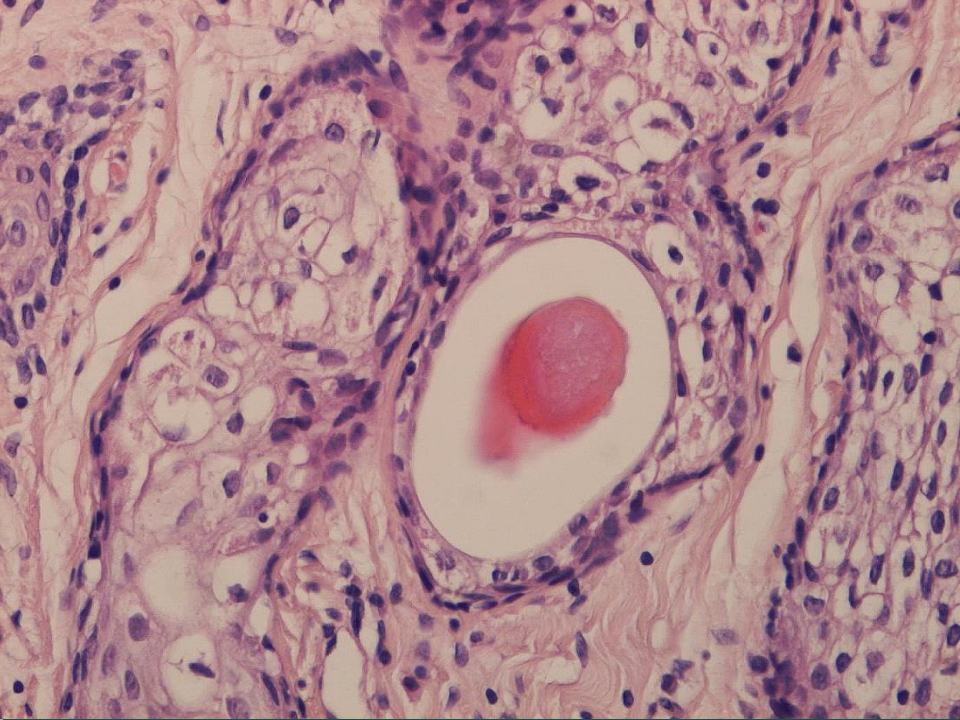
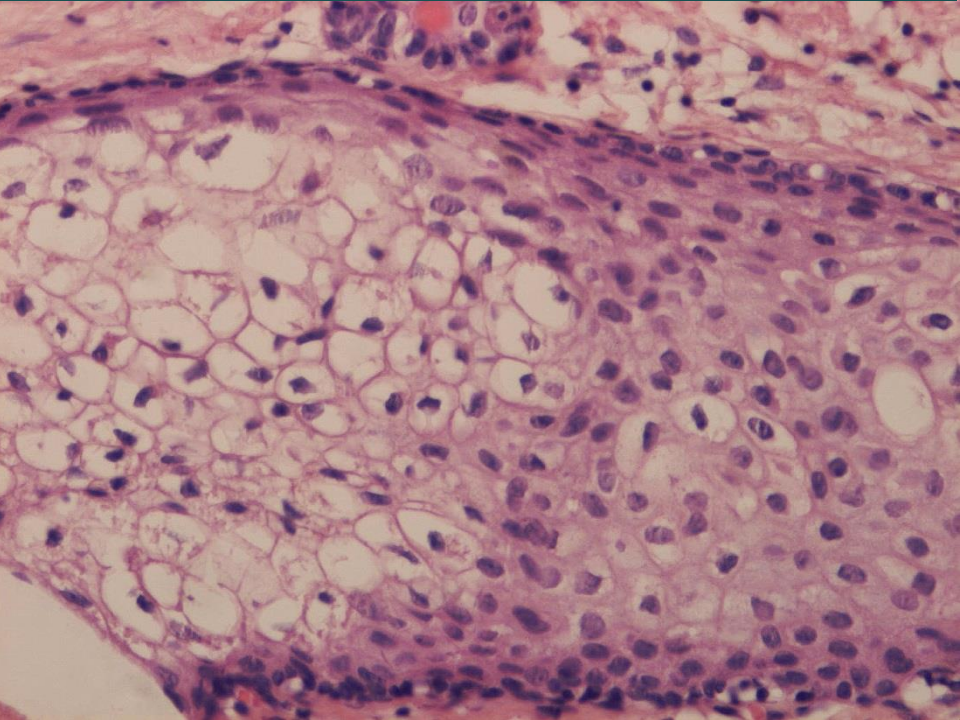
B. Rychlý
Cytopathos s.r.o
Bratislava

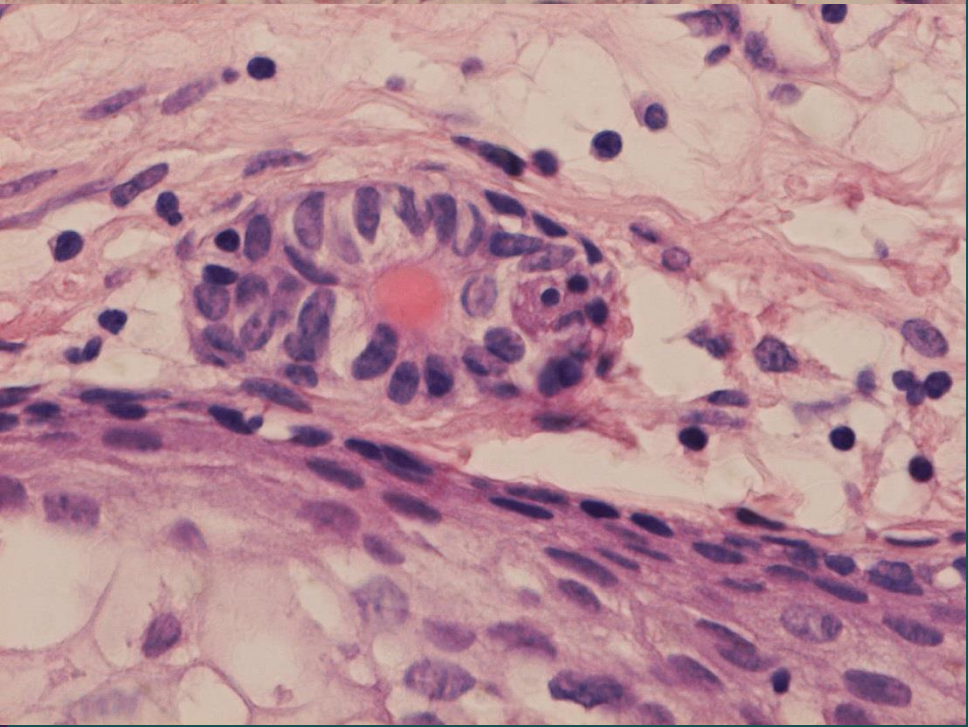
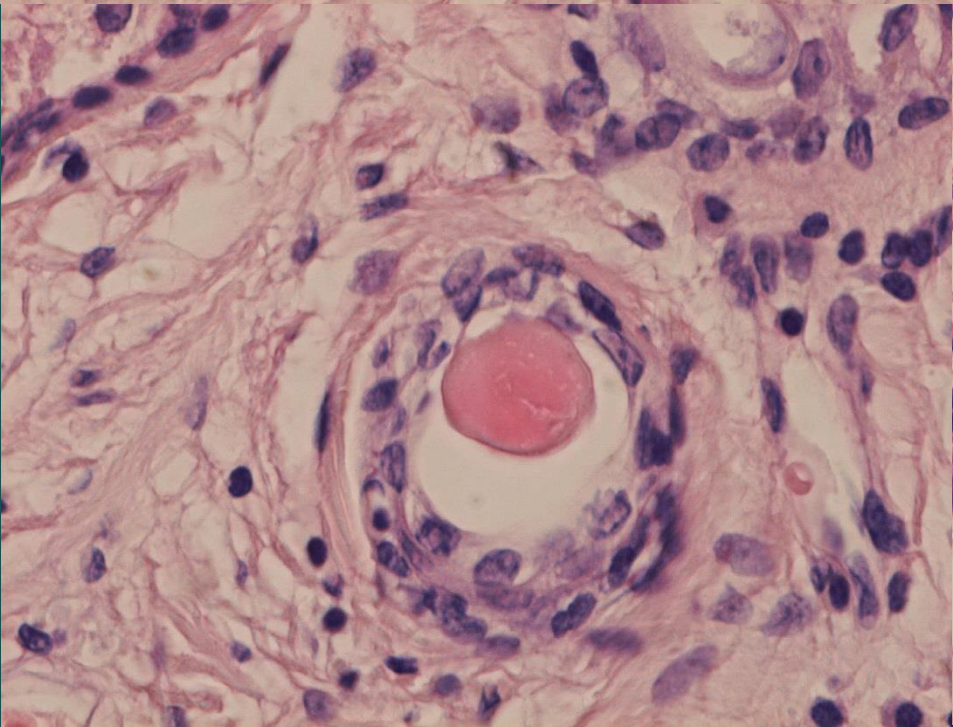
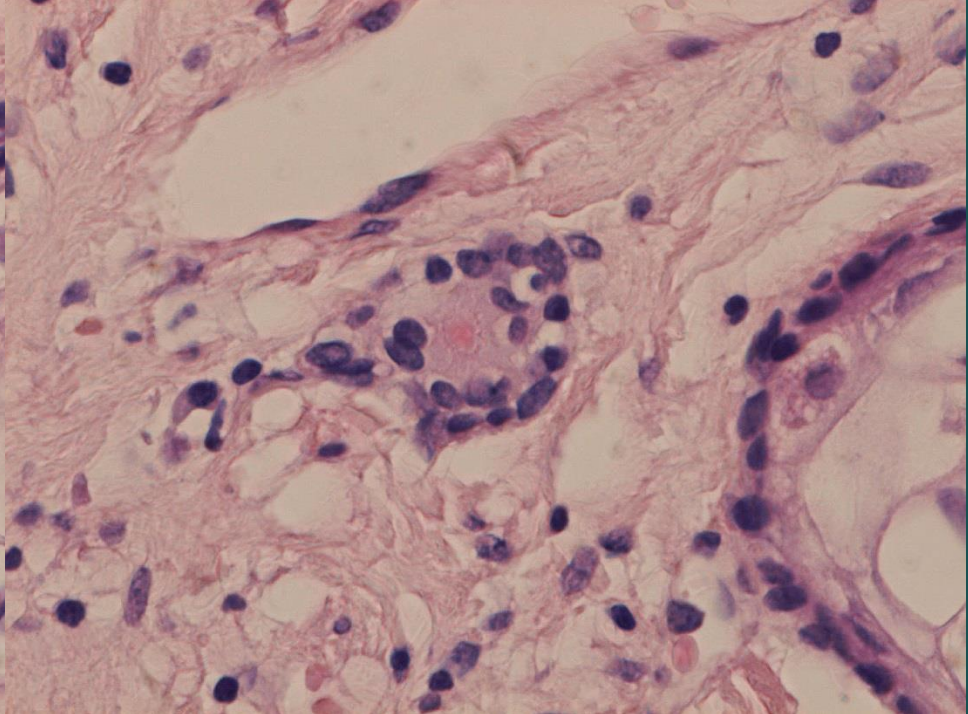
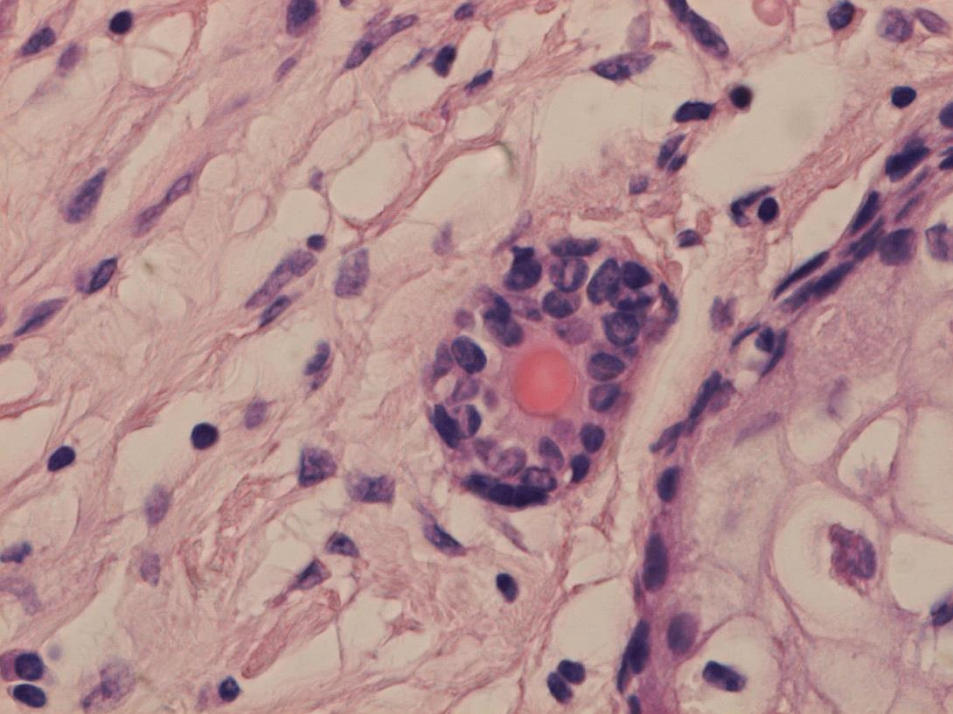
- **Klinické údaje**
 - 48-ročná žena
 - konizácia pre HSIL
- **Makro**
 - značený konus cervixu maternice
34x18x18mm
 - makroskopicky bez podozrivého
nálezu

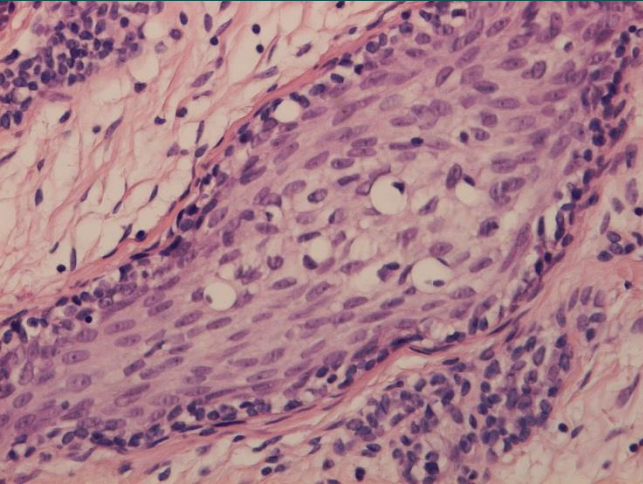
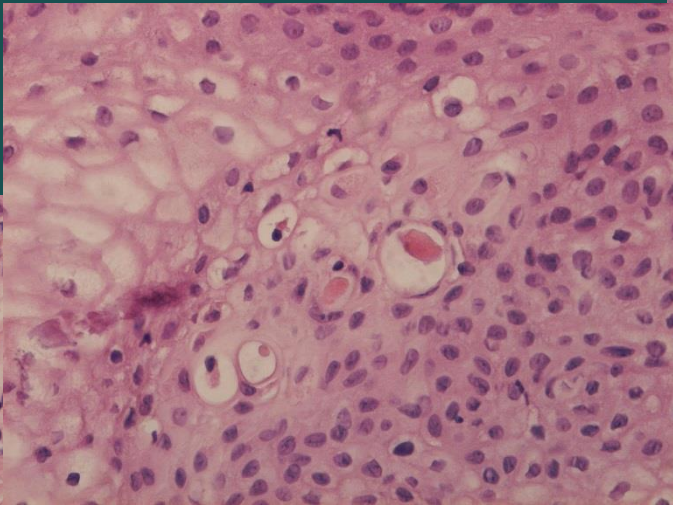
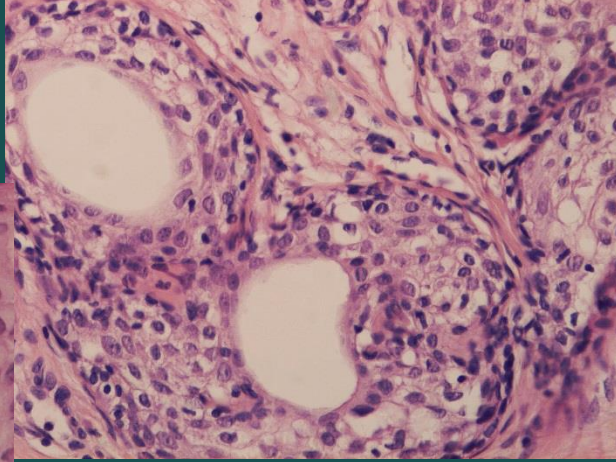
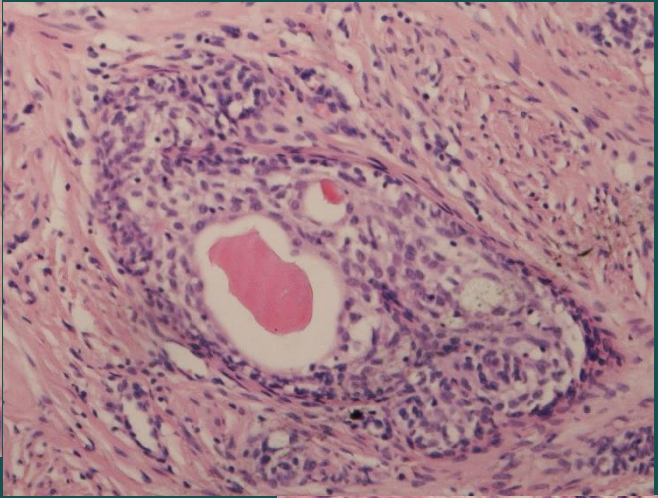
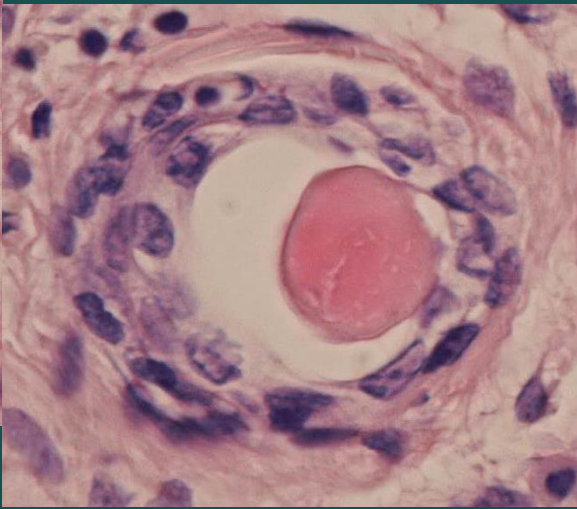
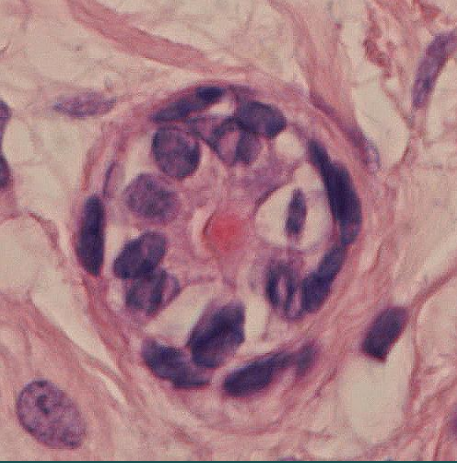


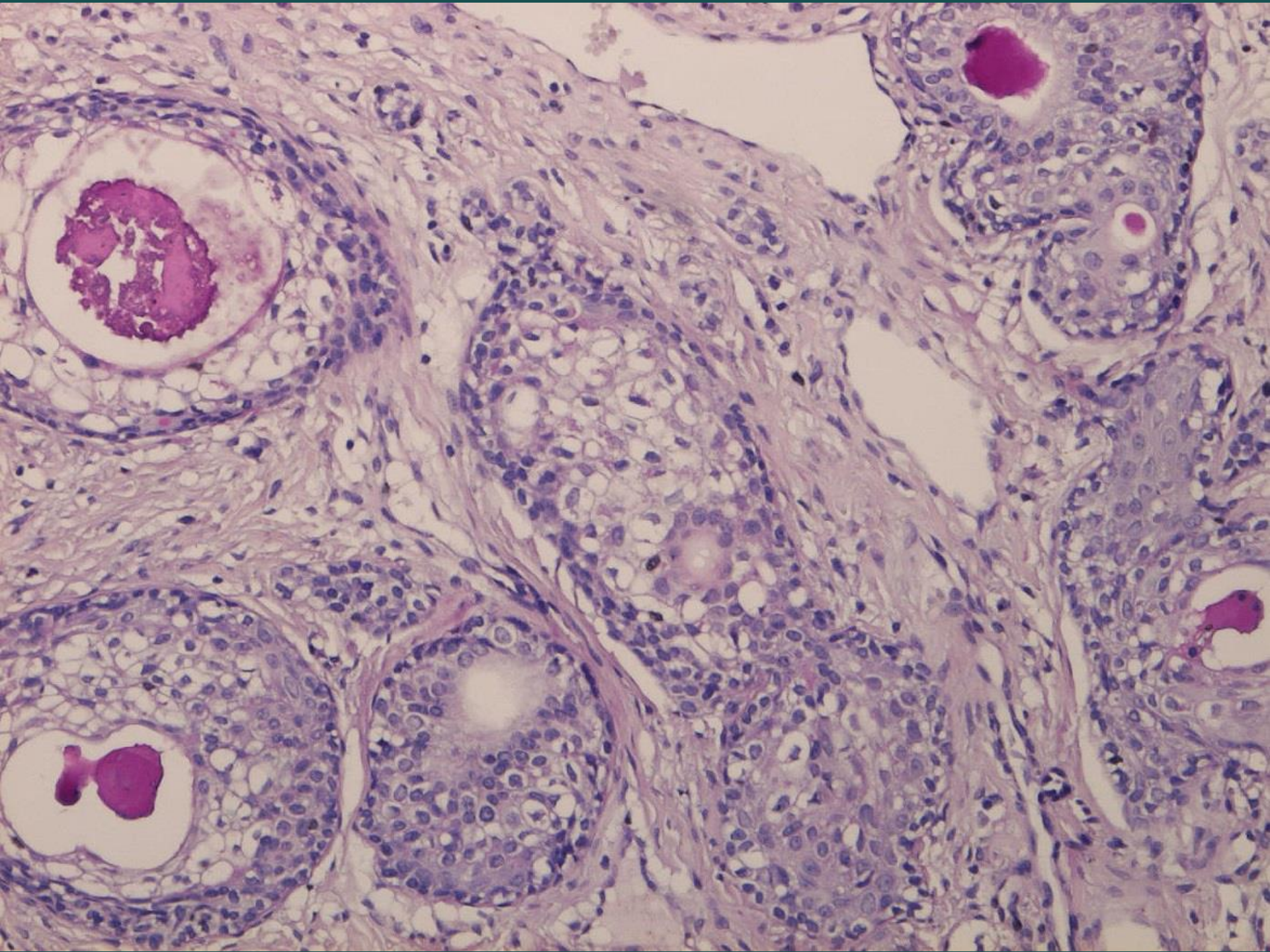




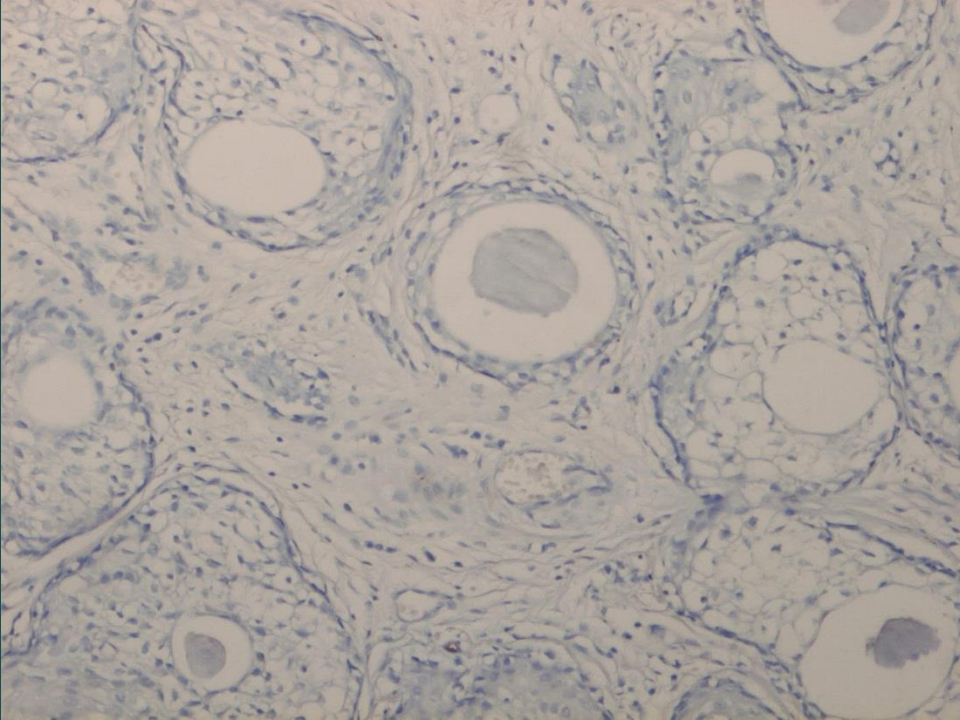




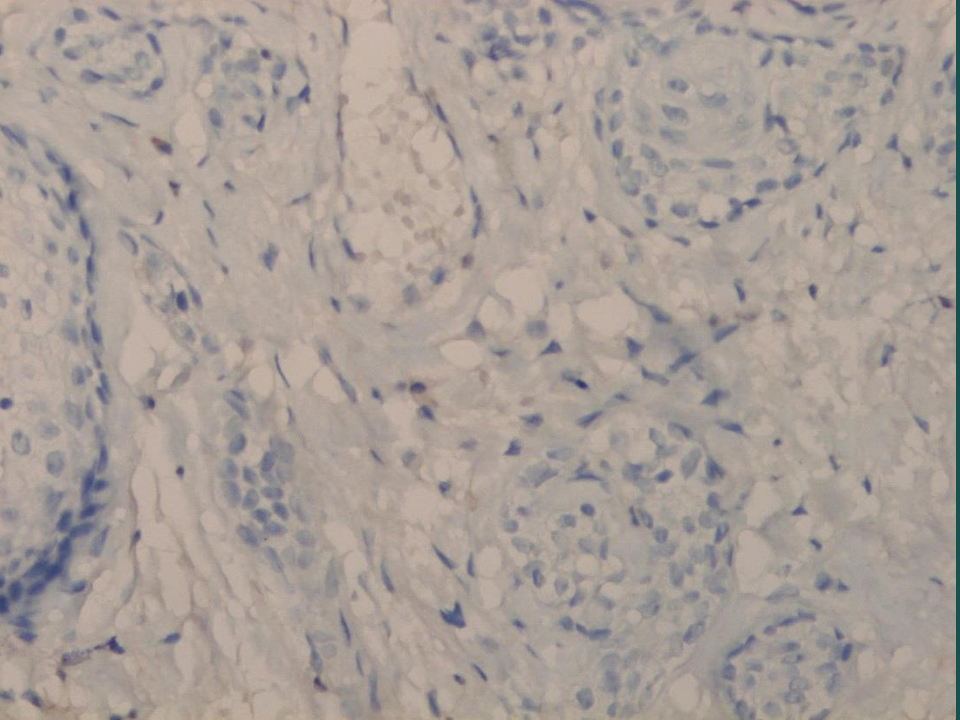




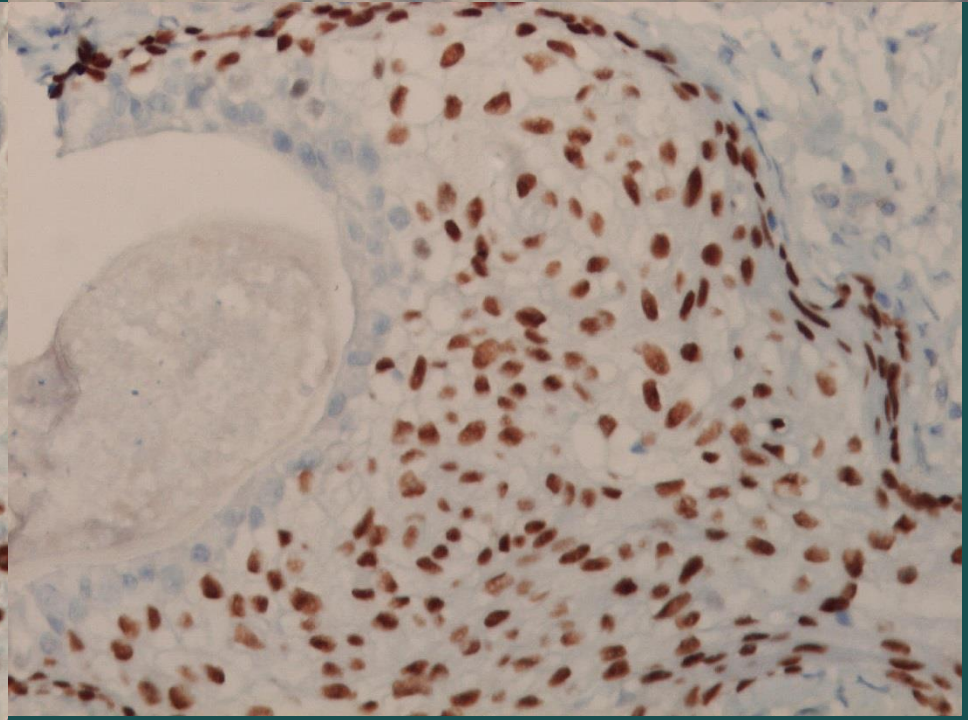
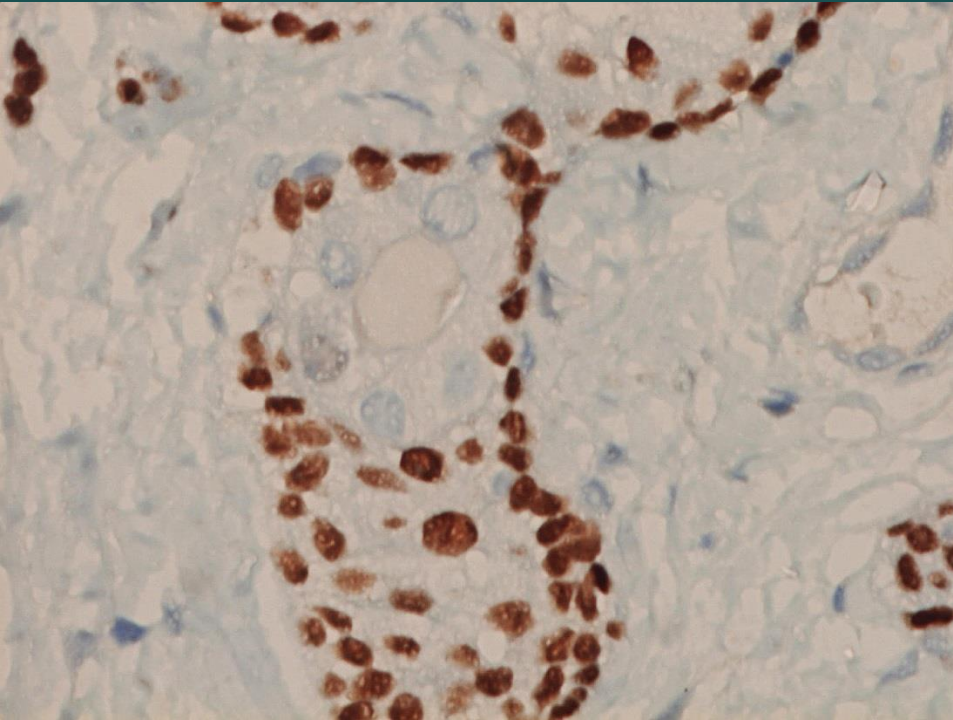
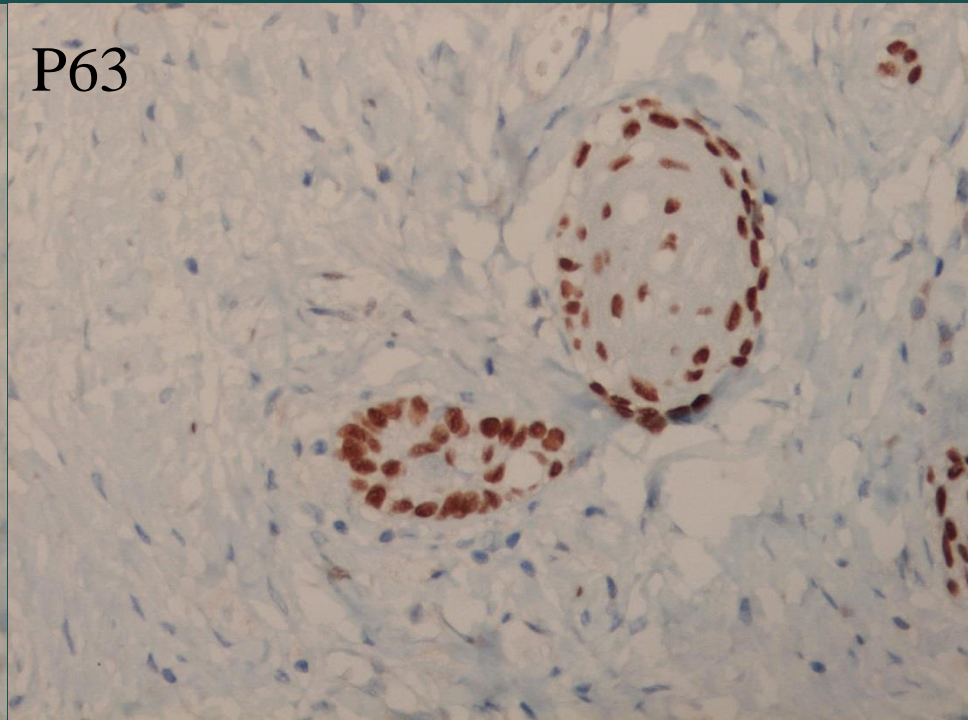
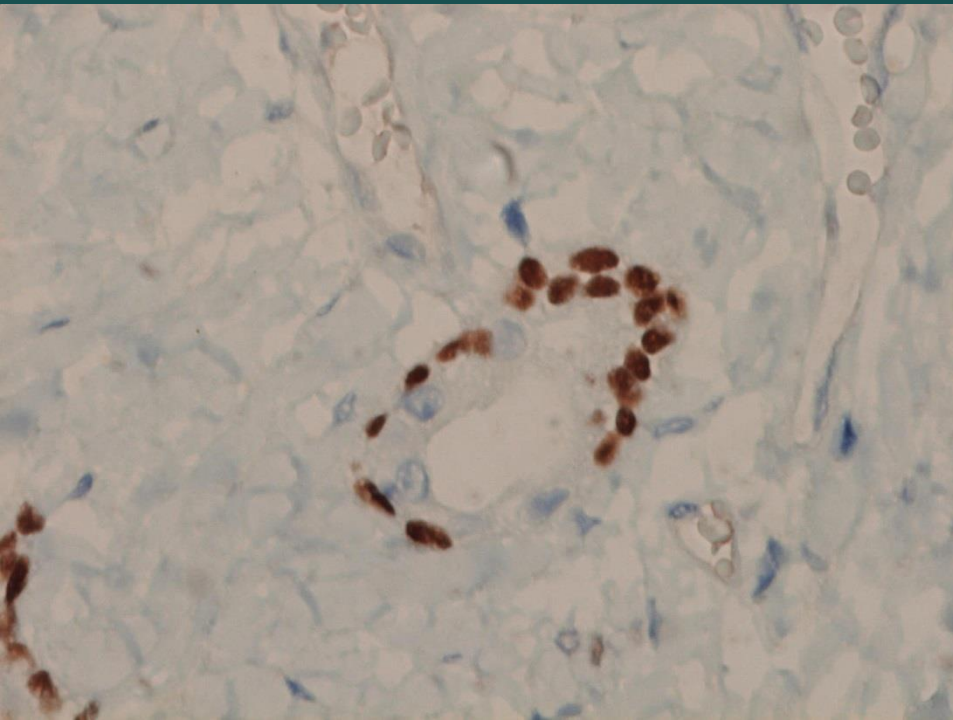


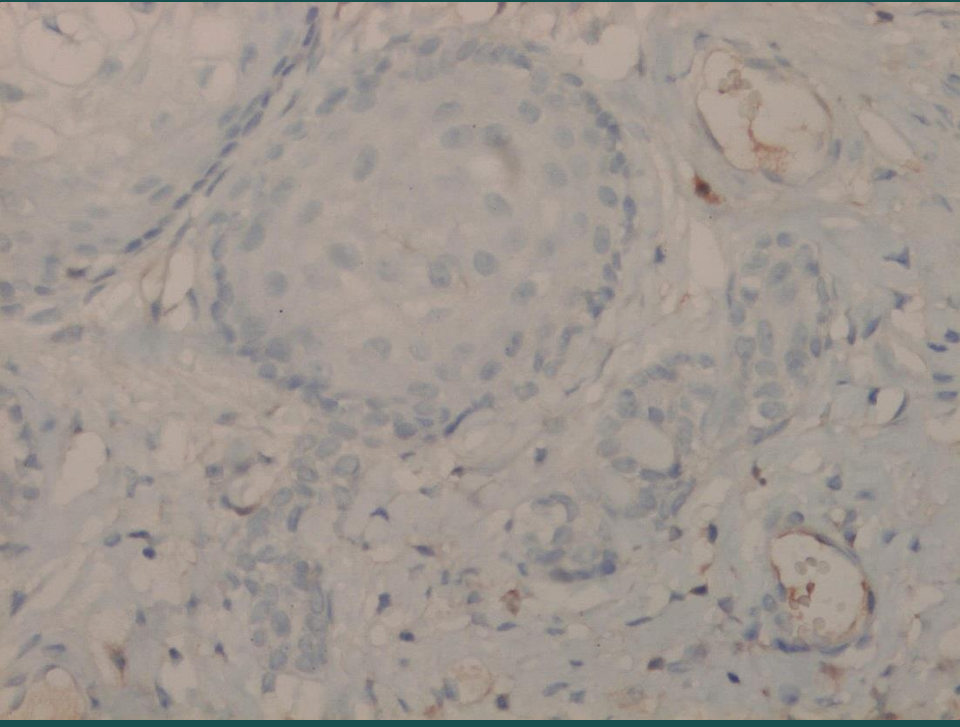
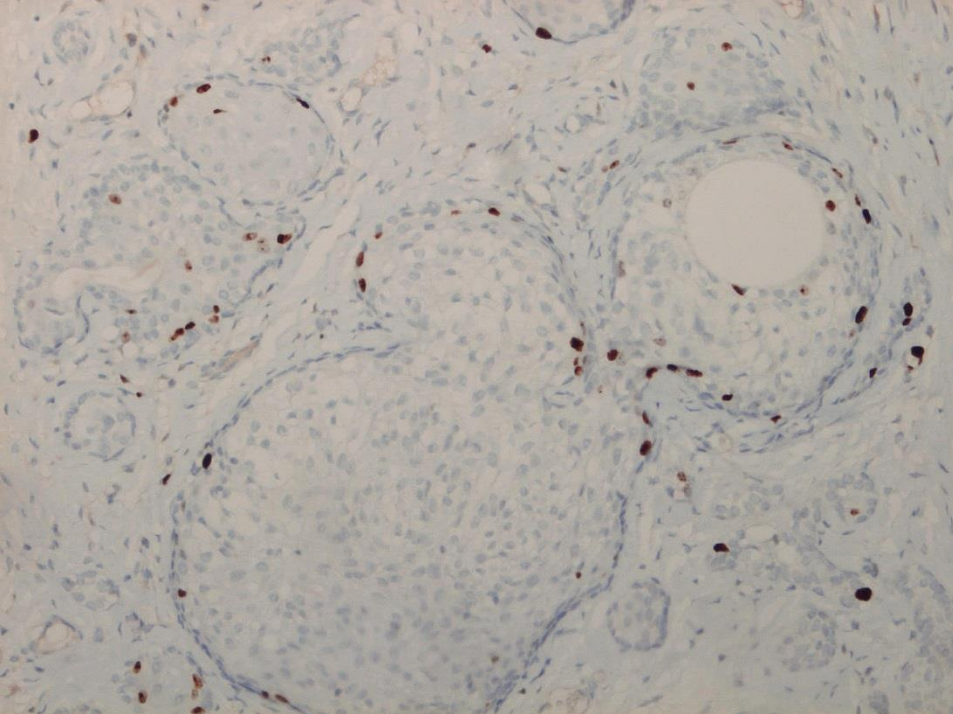


PSA, PSAP



P63







Naša diagnóza

Tubulo-skvamózny polyp cervixu
(endofytický) / „ektopické prostatické
tkanivo“ na cervixe
(PSA a PSAP negatívne?)

Tubulo-squamous Polyp

A Report of Ten Cases of a Distinctive Hitherto Uncharacterized Vaginal Polyp

W. Glenn McCluggage, FRCPath and Robert H. Young, MD†*

(Am J Surg Pathol 2007;31:1013–1019)

- väčšinou postmenopauzálne
- 1-3cm
- v hornej časti vagíny
- 3 / 4 testované PSAP+, 2 / 4 PSA+
- niektoré publikované ako zmiešané tumory vagíny, Brennerové tumory

Ectopic Prostatic Tissue in the Uterine Cervix and Vagina

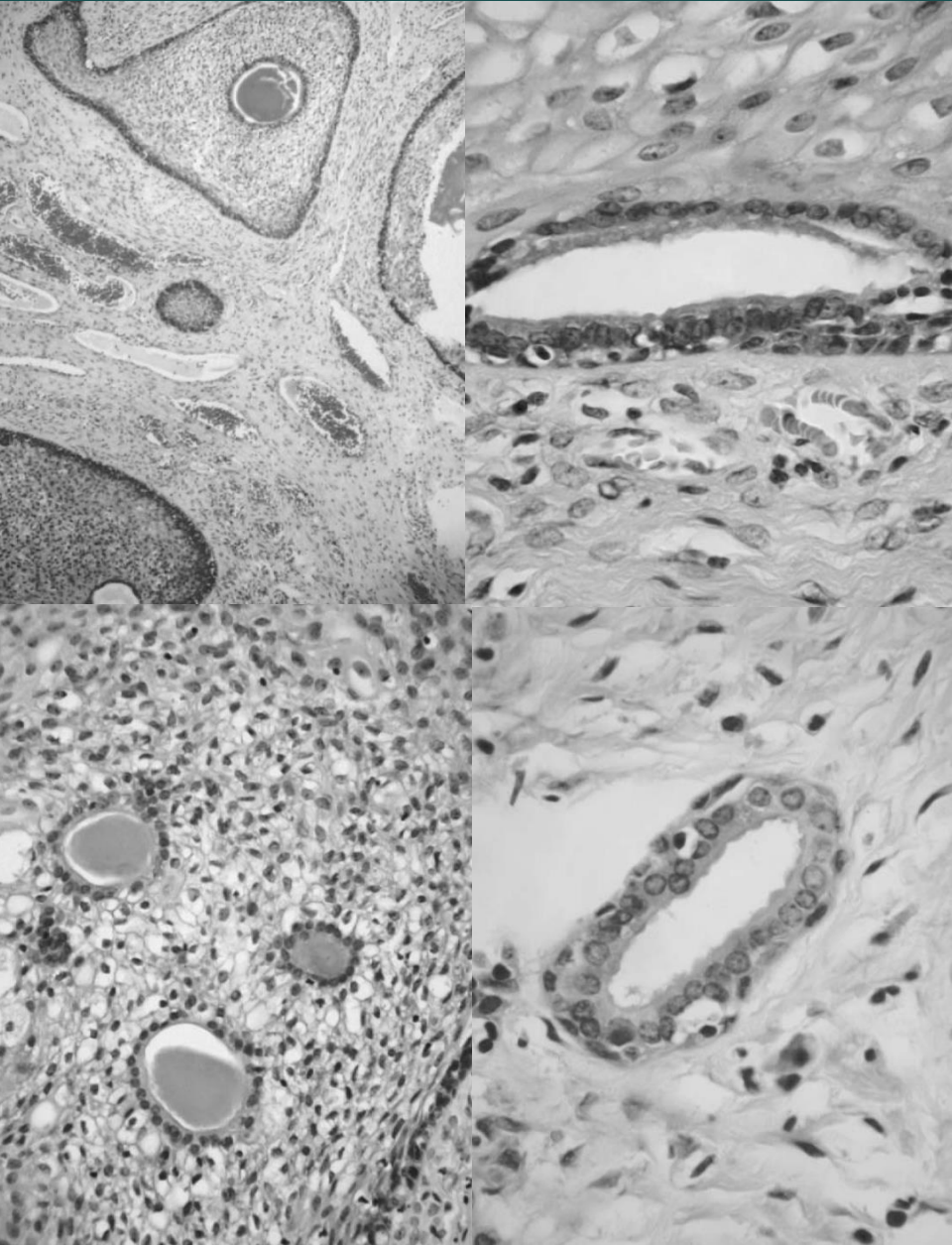
Report of a Series With a Detailed Immunohistochemical Analysis

W. Glenn McCluggage, FRCPath, Raji Ganesan, MRCPath,† Lynn Hirschowitz, FRCPath,‡
Keith Miller, FIBMS,§ and Terence P. Rollason, FRCPath†*

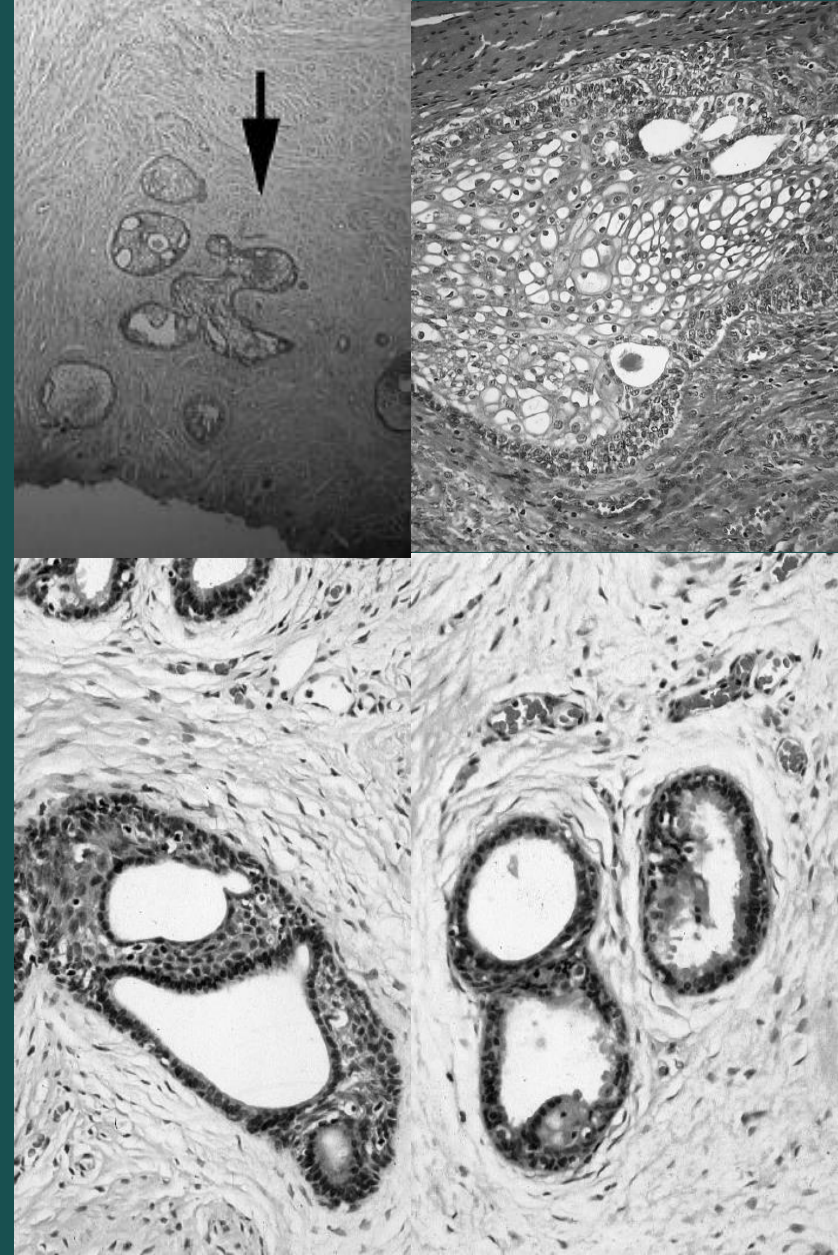
(Am J Surg Pathol 2006;30:209–215)

- 6 cases, 5 na cervixe, 1 vo vagíne
- 6 PSAP pozit., 3 PSA pozit.
- okrem toho, že nie sú polypózne, sú histologicky identické ako tubulo-skvamózny polyp

*W. G. McCluggage, AJSP 2007
Tubulo-squamous polyp of the vagina*



*W. G. McCluggage, AJSP 2006
Ectopic Prostatic Tissue
in the Uterine Cervix and Vagina*



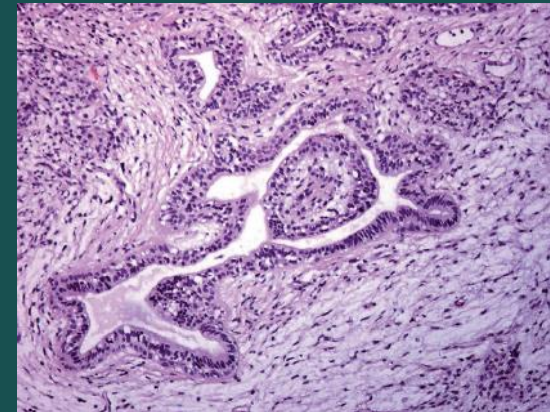
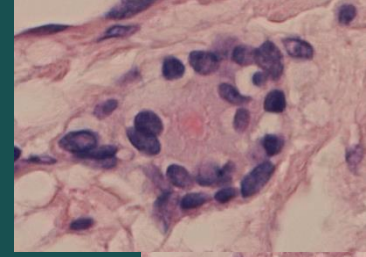
jeden spoločný prípad

Histogenéza

- benígny zmiešaný Mulleriánsky tumor
- Volfiánsky, mezonefrický (skvamózna metaplázia nie)
- Skene / prostata
 - PSA a PSAP, len PSAP alebo negat.
 - ekvivalent v prostate?
 - skvamózna metaplázia v prostate u mužov pod vplyvom estrogénov
 - PSA a PSAP nie sú úplne špecifické pre prostatu (niektoré salivárne tumory, rektálne a ovariálne karcinoidy, prsníkové CA, pankreatické tumory, nefrogénne adenómy,...

Dif. dg.

- excesívna skvamózna metaplázia cervikálnych žliazok (vo vaginálnej adenóze)
- zmiešaný tumor vagíny (spindle cell epithelioma)
- Brennerov tumor
- adenoidne-bazálny CA, skvamózny CA, synoviálny SA,...

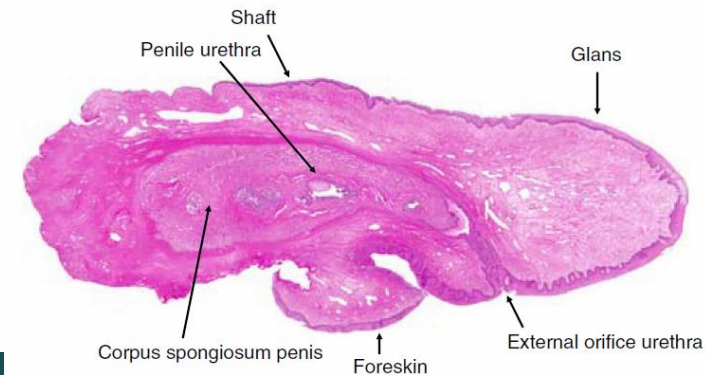


M. R. Nucci, 2009

Case Report

Uterine Cervical Tubulosquamous Polyp Resembling a Penis

Masaharu Fukunaga, M.D.



International Journal of Gynecological Pathology
00:1–3, Lippincott Williams & Wilkins, Baltimore
© 2013 International Society of Gynecological Pathologists

Letter to the Editor

Vaginal-type Tubulo-Squamous Polyp Arising in Mature Cystic Teratoma of the Ovary

To the Editor:

TUBULO-SQUAMOUS POLYP OF THE VAGINA

Dundr P.¹, Povýšil C.¹, Mára M.², Kužel D.²

¹Institute of Pathology and ²Department of Obstetrics and Gynecology, 1st Faculty of Medicine and General Teaching Hospital, Charles University in Prague, Czech Republic

Summary

We report a case of an 86-year-old female with a tubulo-squamous polyp of the vagina. Grossly, the polyp measured 2 x 1.5 x 1 cm. Histologically, it was composed of well-circumscribed nests of squamous cells with bland nuclei. Some of the squamous nests showed central spaces filled with necrotic debris. Small tubules were present at the periphery of some of the nests, and there were a few tubules unassociated with the squamous nests. Furthermore, several larger mucinous glands, some with apparent squamous metaplasia, were present. The stroma was fibrous and rather hypocellular. Surface of the polyp was covered by intact squamous epithelium, which was not connected with the underlying lesion. The recently described tubulo-squamous vaginal polyp represents a distinctive entity. To the best of our knowledge, only one study describing a series of ten cases has been reported in the literature to date.

Key words: tubulo-squamous – polyp – vagina

Souhrn

Tubulo-skvamózní polyp vagíny

Popisujeme tubulo-skvamózní polyp vagíny u 86leté ženy. Makroskopicky se jednalo o lézi velikosti 2 x 1,5 x 1 cm. Histologicky byl polyp tvořen dobře ohraničenými hnízdy dlaždicových buněk s blandními jádry lokalizovanými ve fibrózním stromatu. Některá z těchto hnízd měla centrálně dutinu vyplněnou nekrotickým materiálem. V periferii některých hnízd byly přítomny drobné tubuly. Nečetné tubuly byly zastřeženy i bez souvislosti s hnízdy dlaždicových epitelů. Kromě toho byly přítomny ojedinělé větší mucinózní žlázy, některé s dlaždicobuněčnou metaplazií. Na povrchu polypu byl intaktní vaginální dlaždicový epitel, který s lézí nesouvisel. Tubulo-skvamózní polyp vagíny je recentně popsaná jednotka; v literatuře jsme našli pouze jednu práci popisující 10 případů.

Klíčová slova: tubulo-skvamózní – polyp – vagina

Diskusia

- zriedkavé (nonpolypózne nebioptované, prehliadané?)
- tubulo-skvamózny polyp vagíny a ektopické prostatické tkanivo cervixu a vagíny – rovnaká lézia
- názov nie je optimálny (nemusí byť polypózny, vzťah k prostatickému tkanivu nie je úplne jednoznačný)